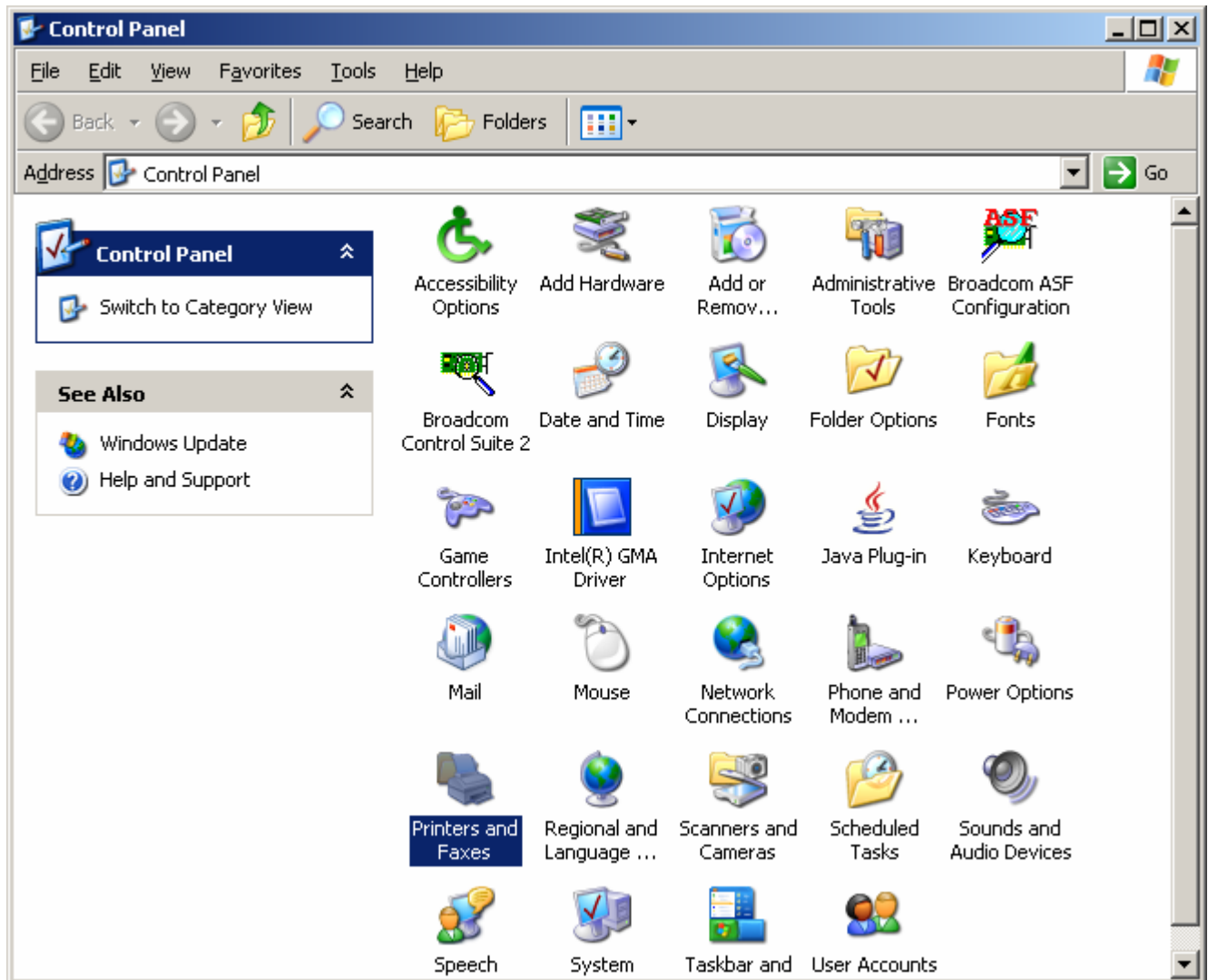


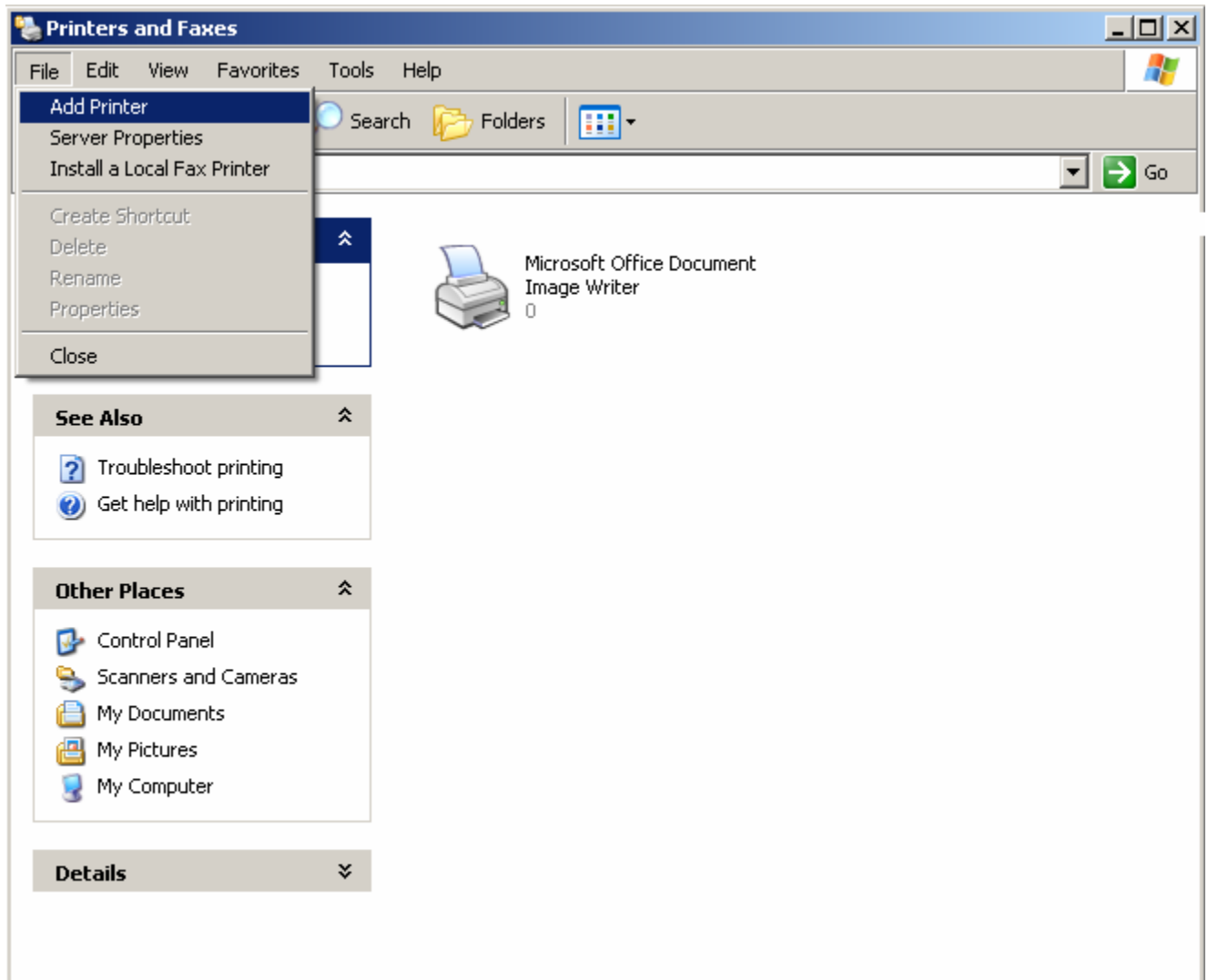
Printer Setup in Windows XP

In the Control Panel, double click "Printers and Faxes".



To add a printer click FILE | ADD PRINTER.

This will load the "Add Printer Wizard".

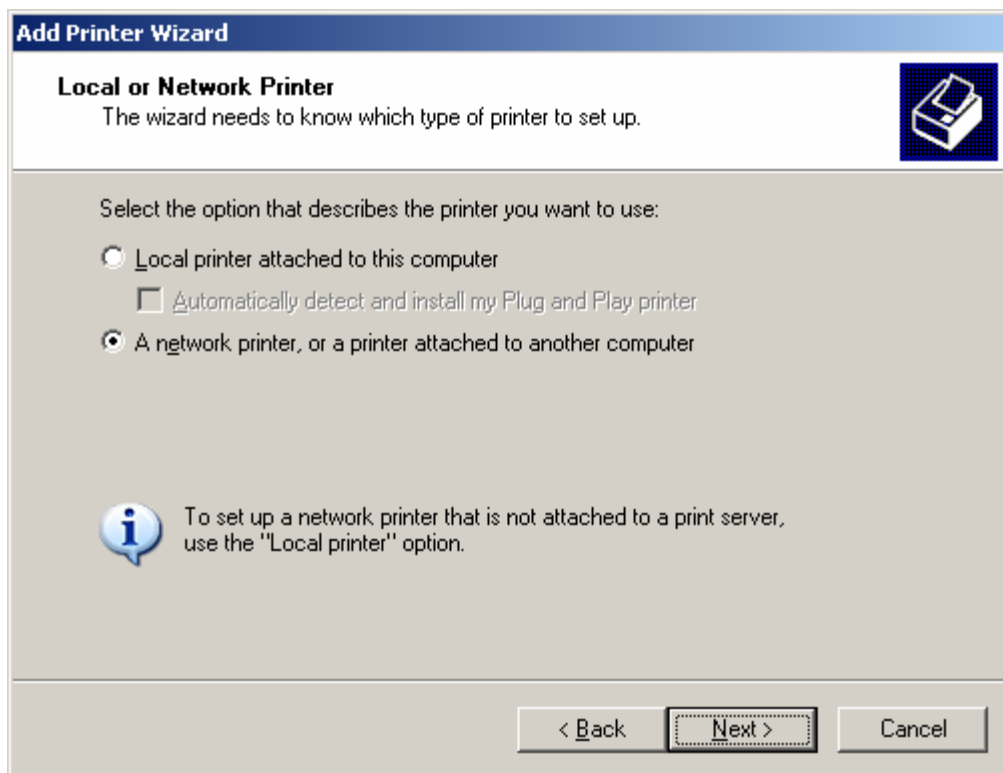


Click "Next".



Click the option "A network printer, or printer attached to another computer".

Click "Next".



Select the option "Connect to a printer on the Internet...".

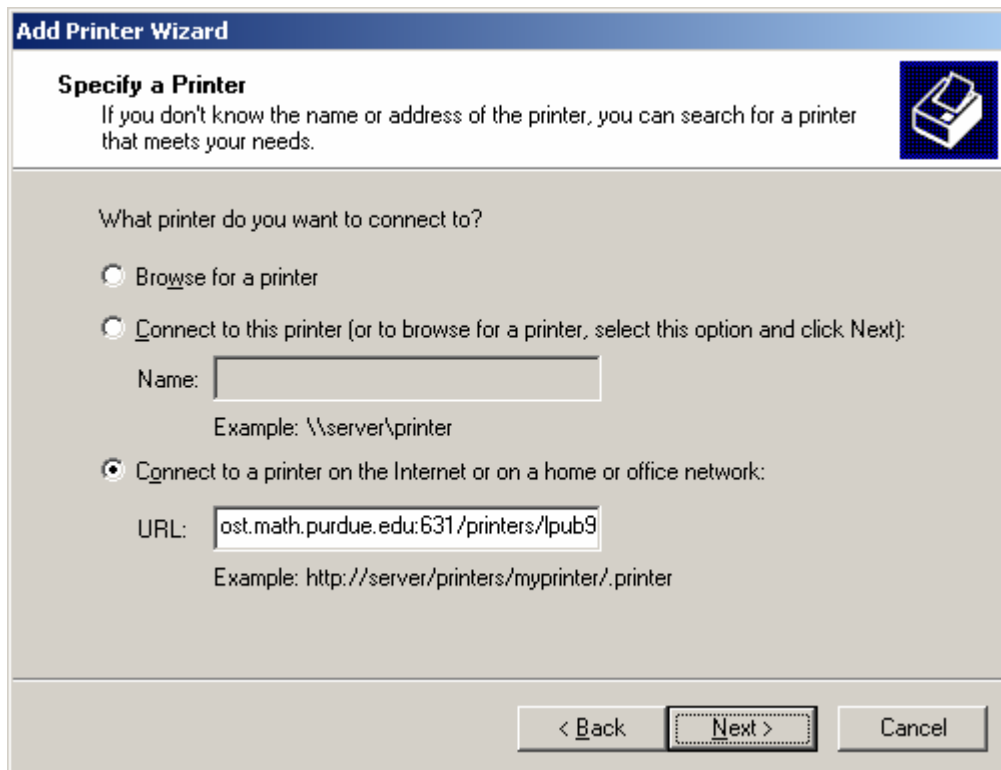
Type in the following URL:

http://printhost.math.purdue.edu:631/printers/[name of printer]

For example, to setup printer lpub9:

http://printhost.math.purdue.edu:631/printers/lpub9

Click "Next".



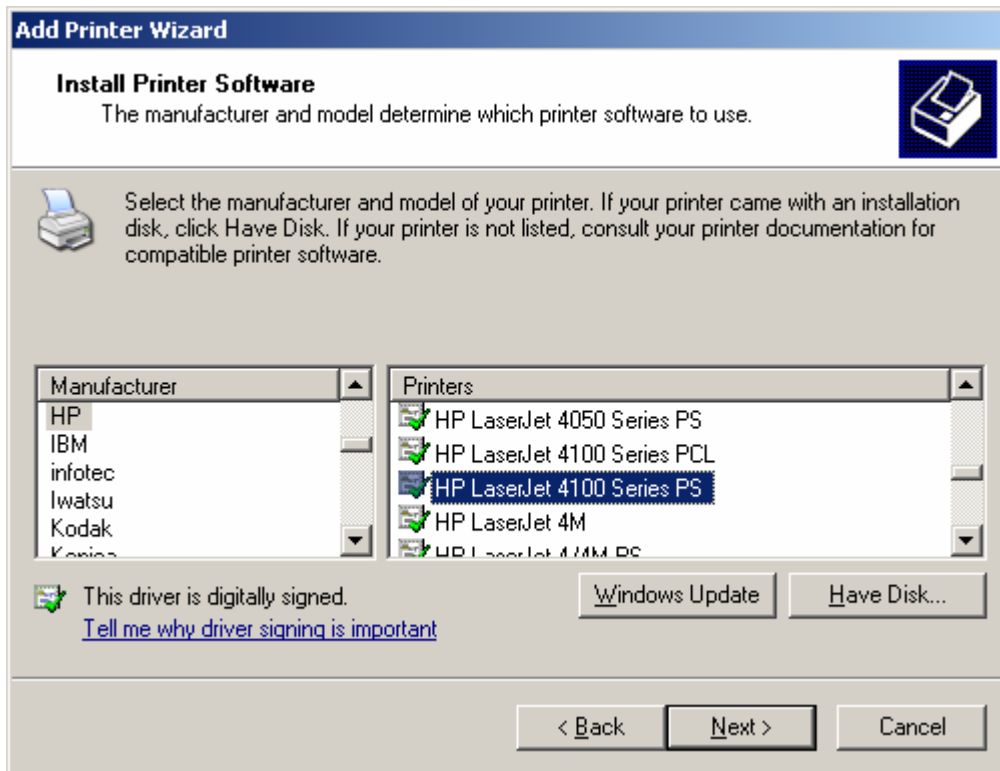
The image shows a screenshot of the "Add Printer Wizard" dialog box, specifically the "Specify a Printer" step. The dialog has a blue title bar with the text "Add Printer Wizard". Below the title bar, the text "Specify a Printer" is displayed in bold, followed by a smaller instruction: "If you don't know the name or address of the printer, you can search for a printer that meets your needs." To the right of this text is a small icon of a printer. The main area of the dialog contains the question "What printer do you want to connect to?" and three radio button options. The first option is "Browse for a printer". The second option is "Connect to this printer (or to browse for a printer, select this option and click Next);", with a text box labeled "Name:" and an example "\\server\printer". The third option is "Connect to a printer on the Internet or on a home or office network:", with a text box labeled "URL:" containing the text "ost.math.purdue.edu:631/printers/lpub9" and an example "http://server/printers/myprinter/.printer". At the bottom of the dialog are three buttons: "< Back", "Next >", and "Cancel". The "Next >" button is highlighted with a dashed border.

Select the **correct POSTSCRIPT (PS) driver** for the printer you are setting up.

You may have to download the drivers from the printer manufacturer's web site.

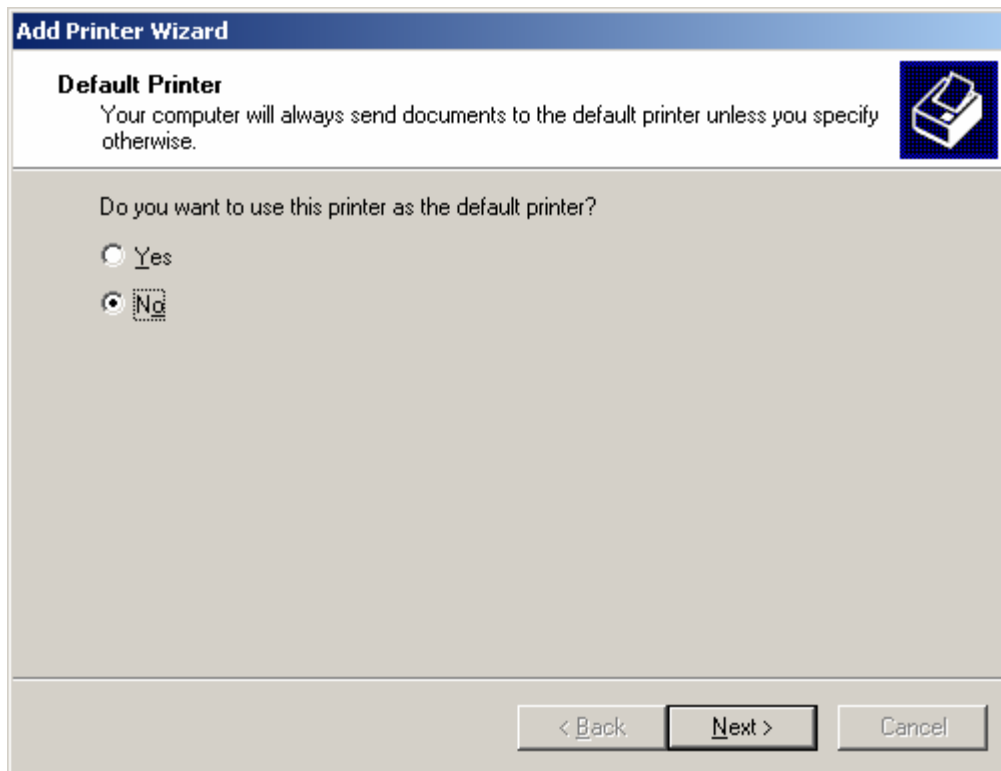
Refer to the "Printers" page on the Computing Resources website for a list of printers.

Click "Next".

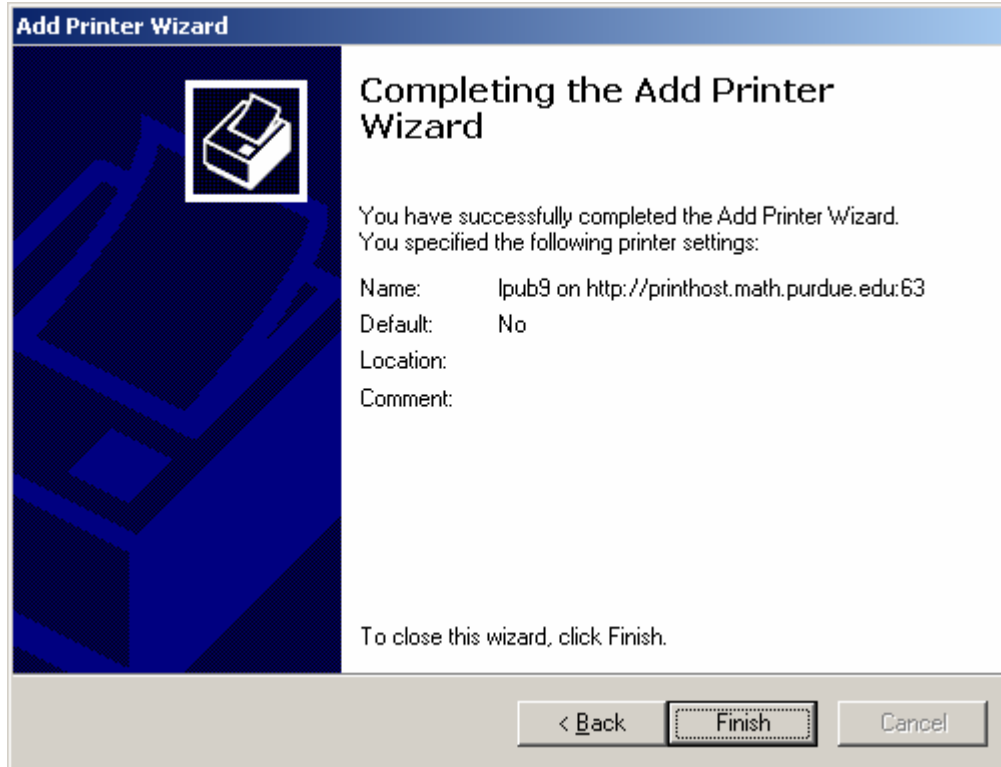


Select whether or not to make this the default printer.

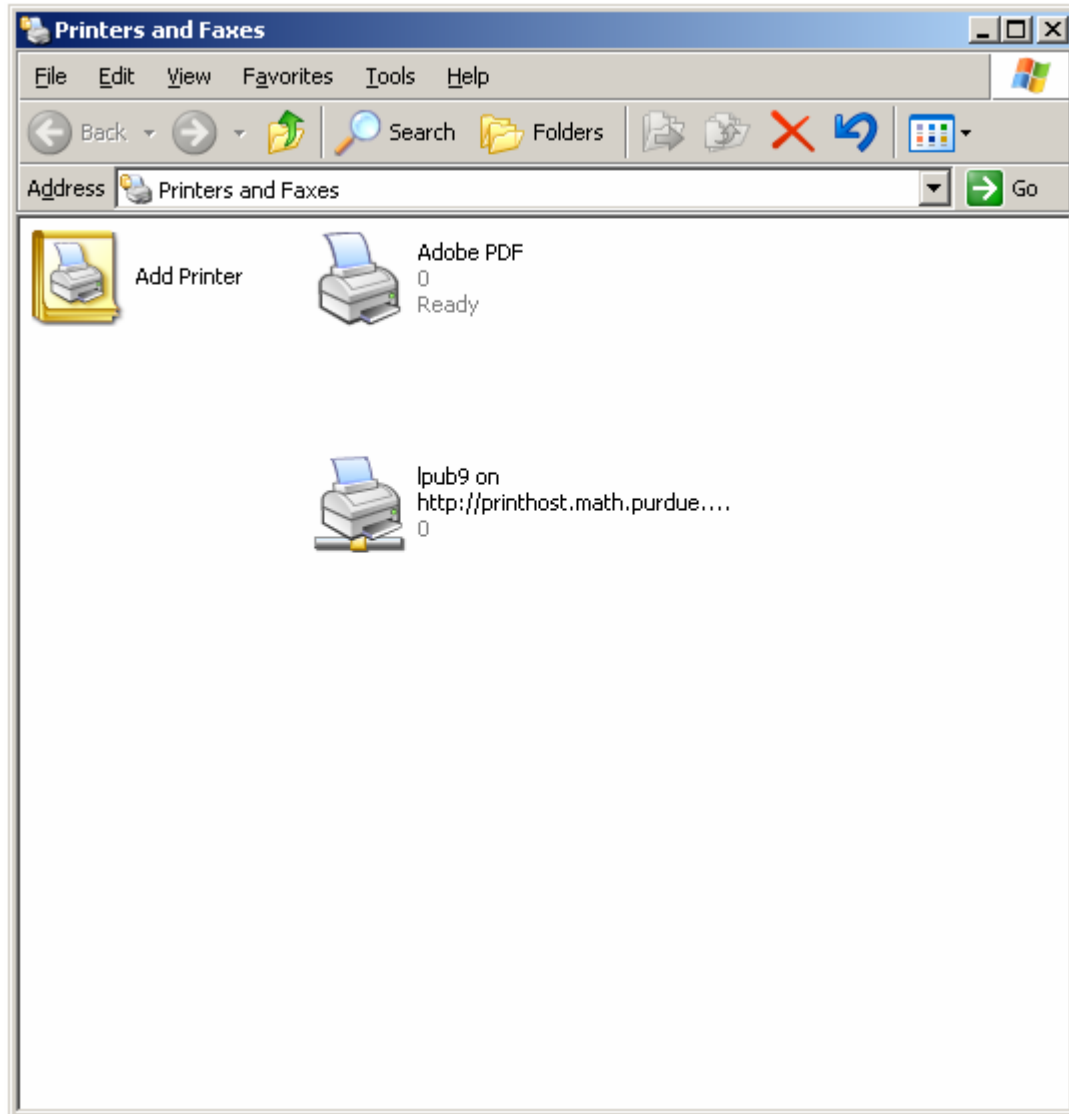
Click "Next".



Click "Finish".



The printer should now be in the printer list.



Email systems@math.purdue.edu if you need assistance.

D. Brown
11/12/04