

Printer Xerox Phaser 8400 Setup in Windows XP

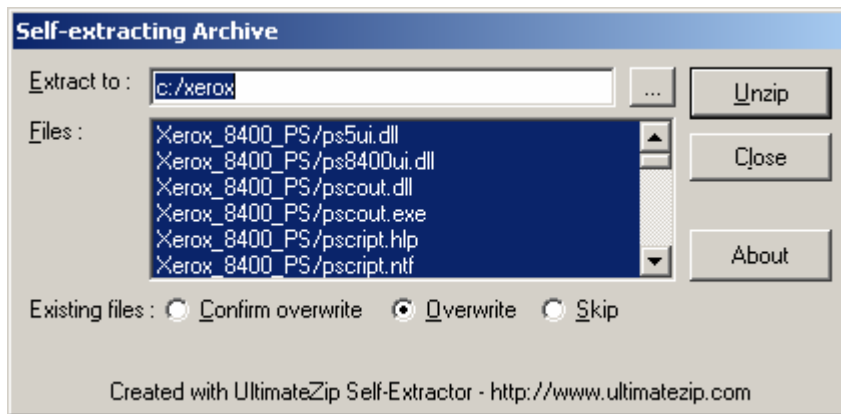
Download the self-extracting ZIP file for the Xerox Phaser 8400 from the Computing Resources website. Click “Printers” in the navigation bar to find the drivers.

Execute the self-extracting ZIP file (XEROX_8400_PS.EXE).

Click “Unzip”.

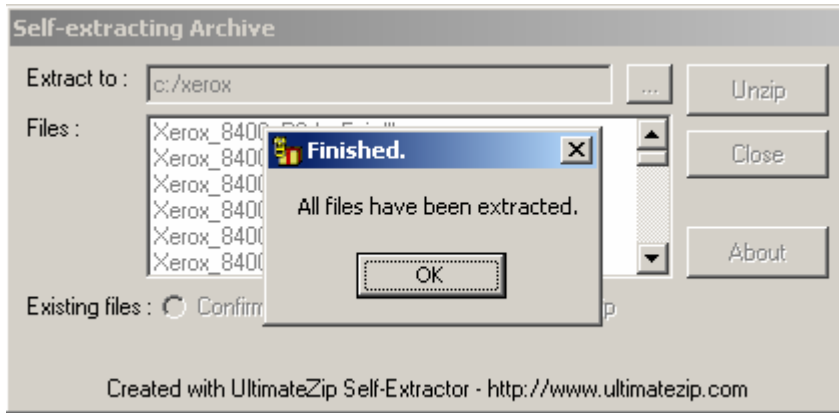
This will extract the drivers to the following directory:

C:/Xerox/Xerox_8400_PS/

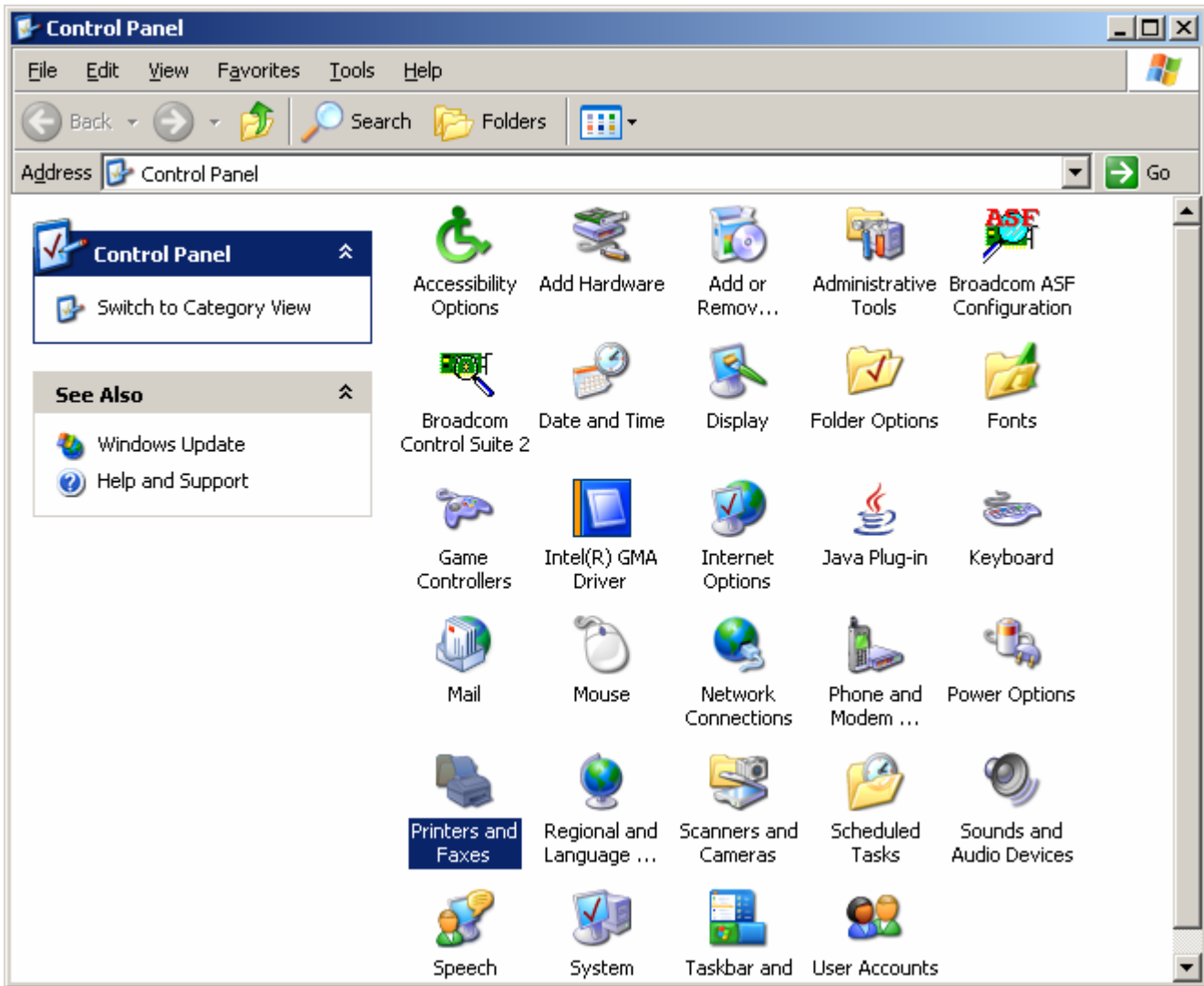


Once the files have been extracted, click “OK”.

The self-extracting utility will close automatically.

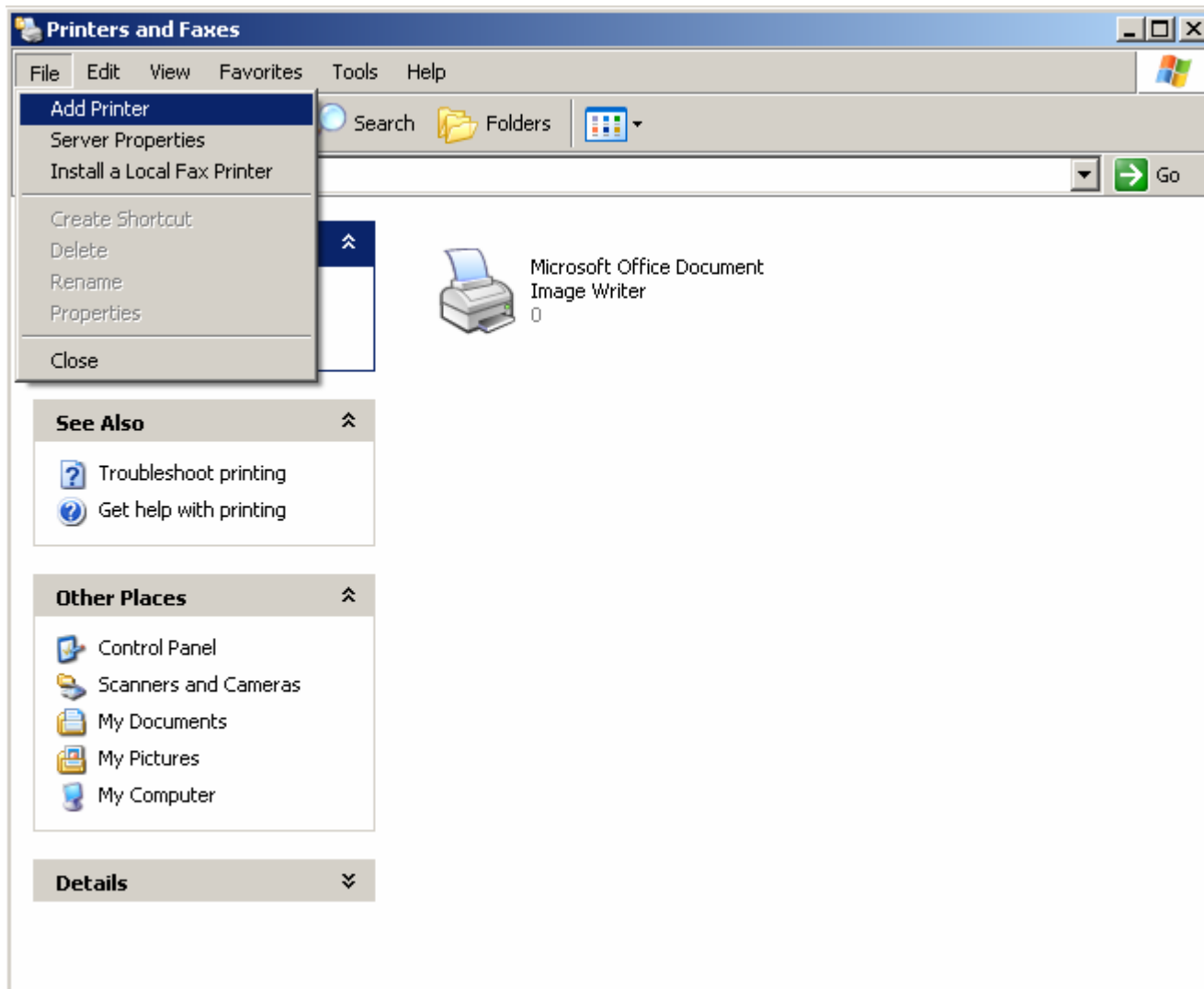


In the Control Panel, double click "Printers and Faxes".



To add a printer click FILE | ADD PRINTER.

This will load the "Add Printer Wizard".



Click "Next".



Click the option "A network printer, or printer attached to another computer".


Click "Next".

Add Printer Wizard

Local or Network Printer
The wizard needs to know which type of printer to set up.

Select the option that describes the printer you want to use:

- Local printer attached to this computer
 - Automatically detect and install my Plug and Play printer
- A network printer, or a printer attached to another computer

 To set up a network printer that is not attached to a print server, use the "Local printer" option.

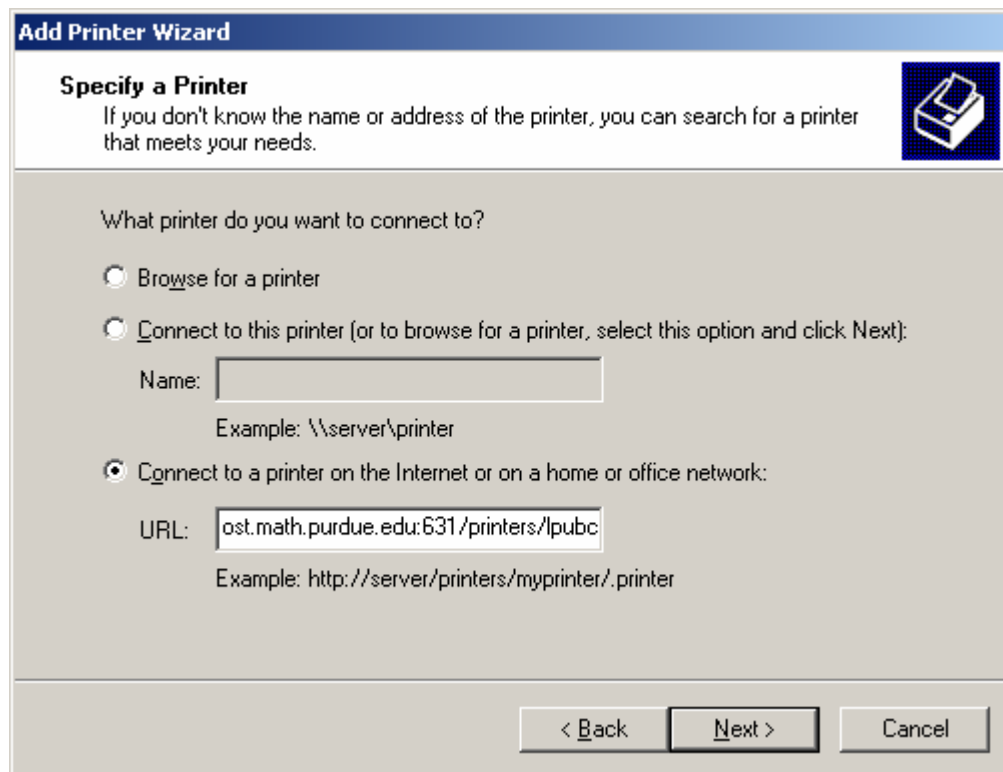
< Back Next > Cancel

Select the option "Connect to a printer on the Internet...".

Type in the following URL:

http://printhost.math.purdue.edu:631/printers/lpubc

Click "Next".



The image shows a screenshot of the 'Add Printer Wizard' dialog box, specifically the 'Specify a Printer' step. The dialog has a blue title bar with the text 'Add Printer Wizard'. Below the title bar, the section is titled 'Specify a Printer' and includes a printer icon. The text reads: 'If you don't know the name or address of the printer, you can search for a printer that meets your needs.' The main area contains the question 'What printer do you want to connect to?' followed by three radio button options. The first option is 'Browse for a printer'. The second option is 'Connect to this printer (or to browse for a printer, select this option and click Next):', with a text input field for 'Name:' and an example '\\server\printer'. The third option is selected: 'Connect to a printer on the Internet or on a home or office network:', with a text input field for 'URL:' containing 'ost.math.purdue.edu:631/printers/lpubc' and an example 'http://server/printers/myprinter/.printer'. At the bottom, there are three buttons: '< Back', 'Next >', and 'Cancel'.

Add Printer Wizard

Specify a Printer
If you don't know the name or address of the printer, you can search for a printer that meets your needs.

What printer do you want to connect to?

Browse for a printer

Connect to this printer (or to browse for a printer, select this option and click Next):

Name:

Example: \\server\printer

Connect to a printer on the Internet or on a home or office network:

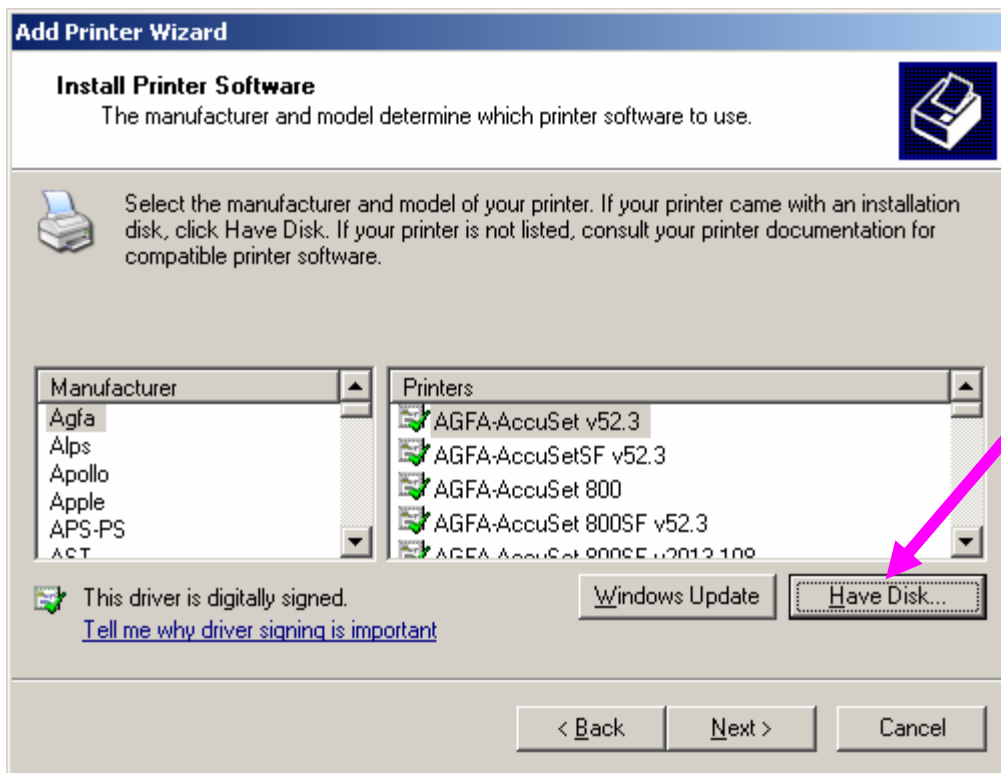
URL:

Example: http://server/printers/myprinter/.printer

< Back Next > Cancel

Click the "Have Disk..." button.

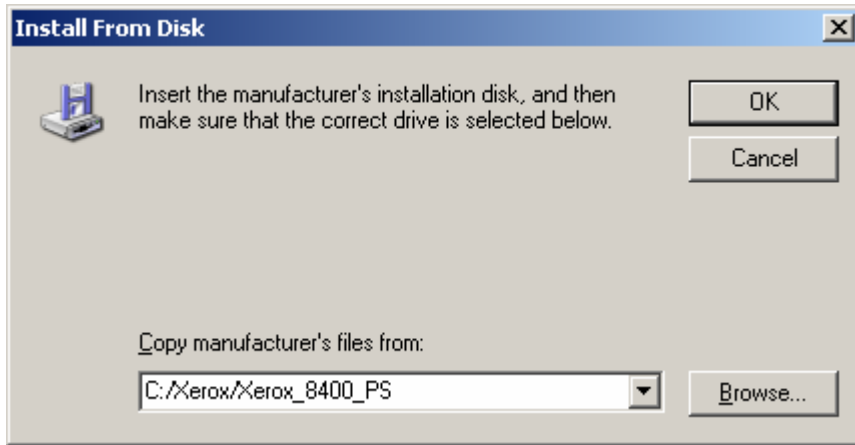
Click "Next".



Enter the following path into the text box:

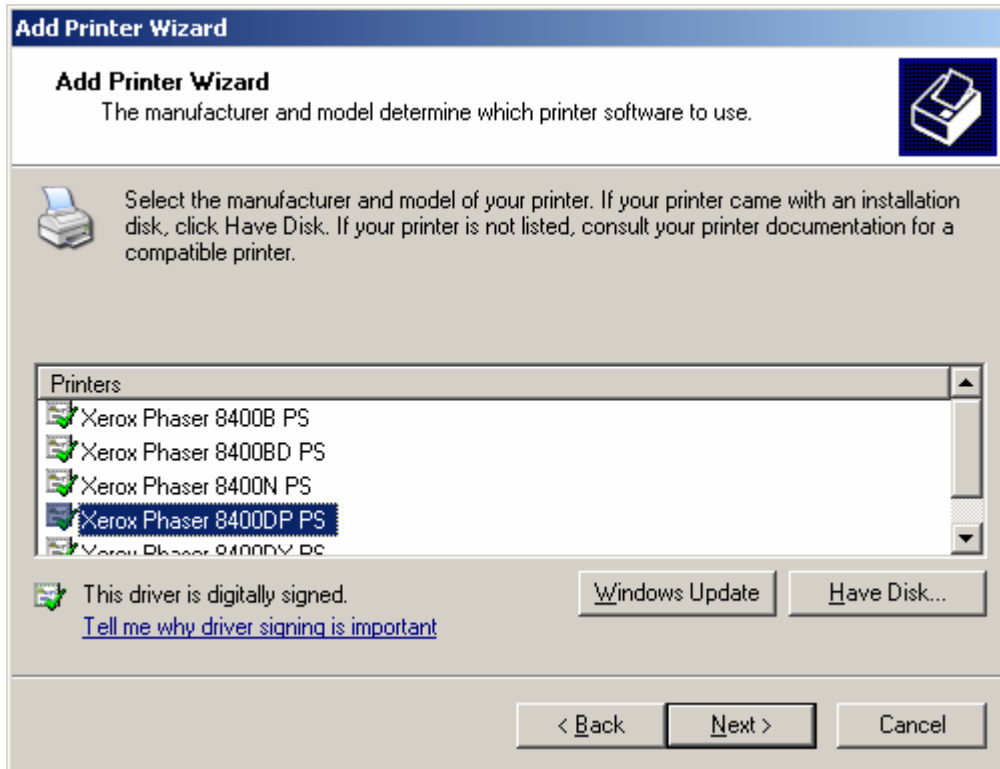
C:/Xerox/Xerox_8400_PS

Click "OK".



Select "Xerox Phaser 8400DP PS" from the list of drivers.

Click "Next >".




Select whether or not to make this the default printer.

Click "Next".

Add Printer Wizard

Default Printer
Your computer will always send documents to the default printer unless you specify otherwise.



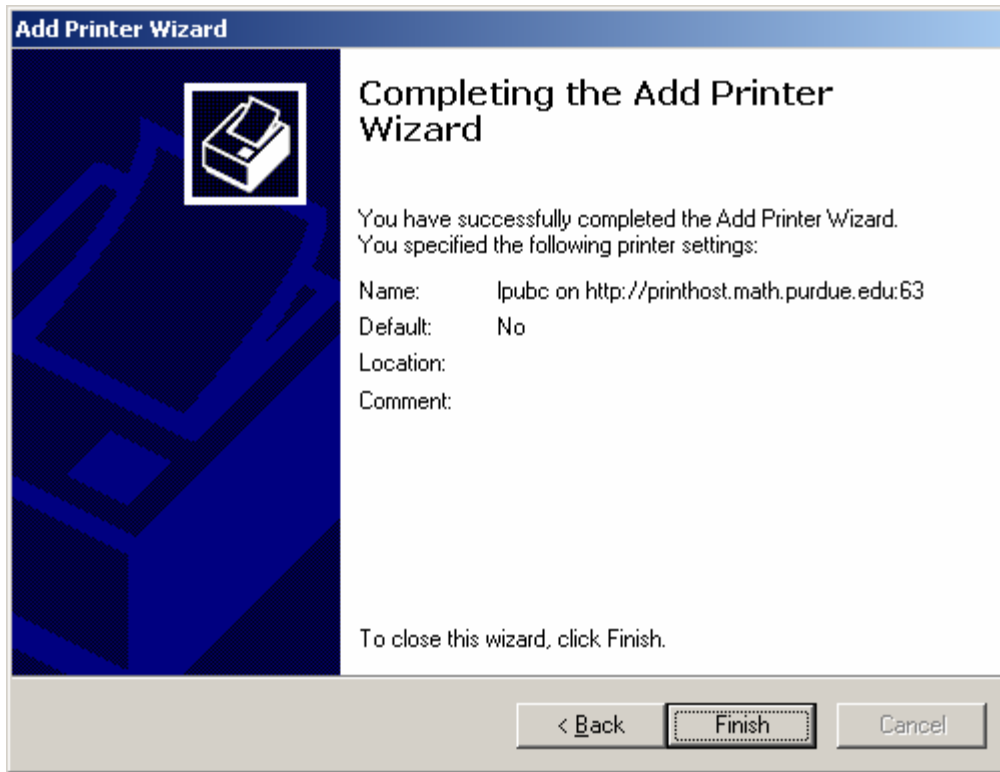
Do you want to use this printer as the default printer?

Yes

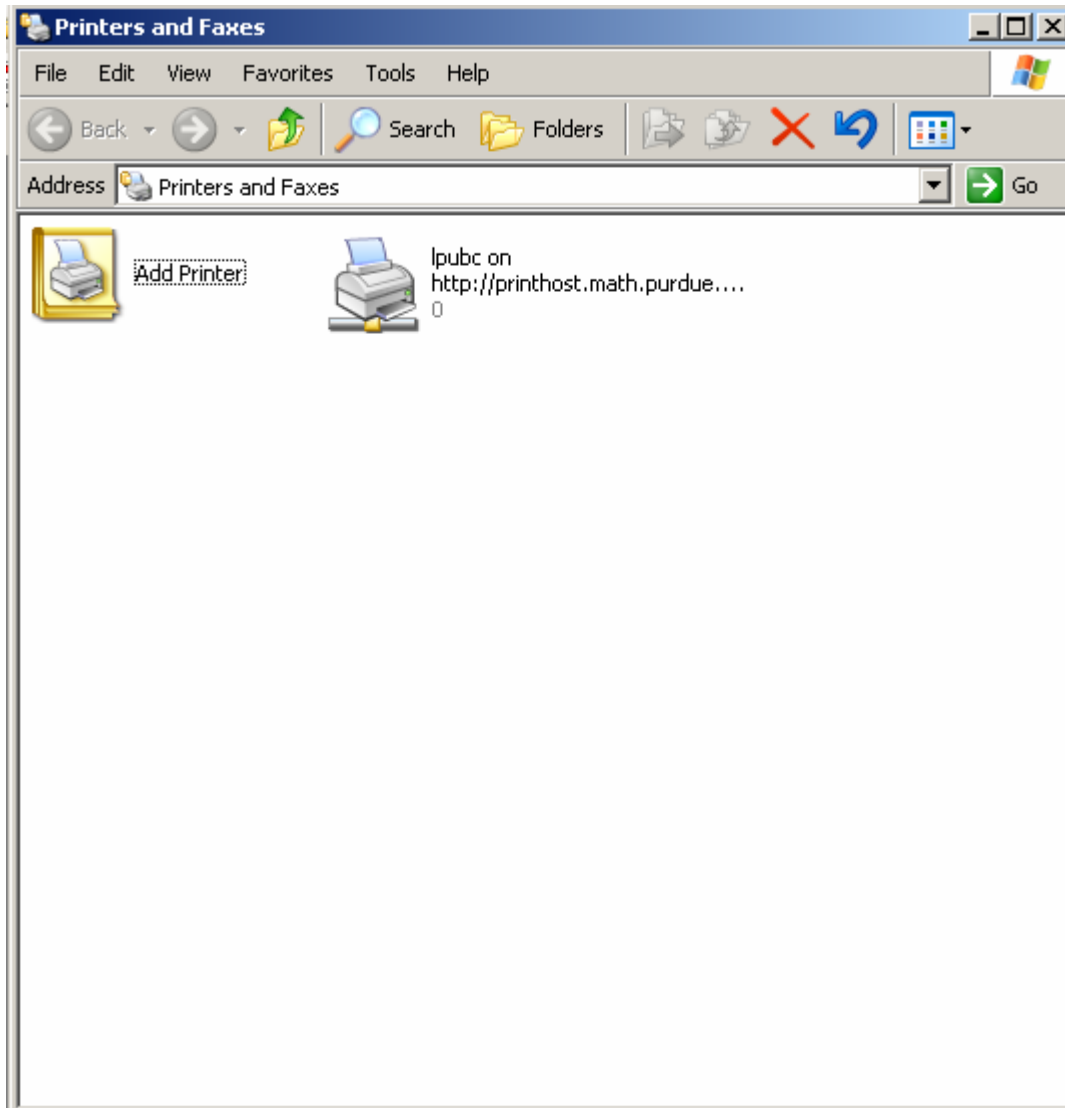
No

< Back Next > Cancel

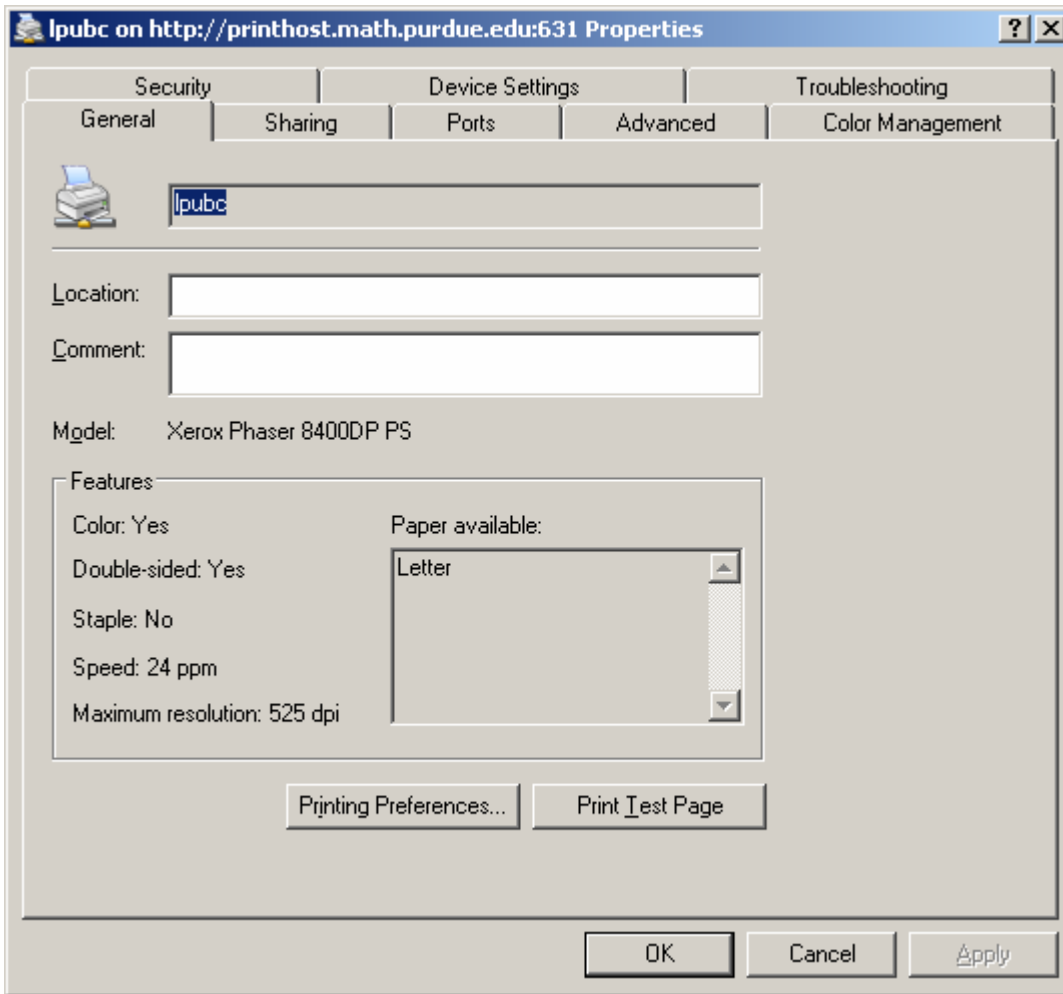
Click "Finish".



The printer should now be in the printer list.



Right click on the Xerox printer you just added and then select "Properties".

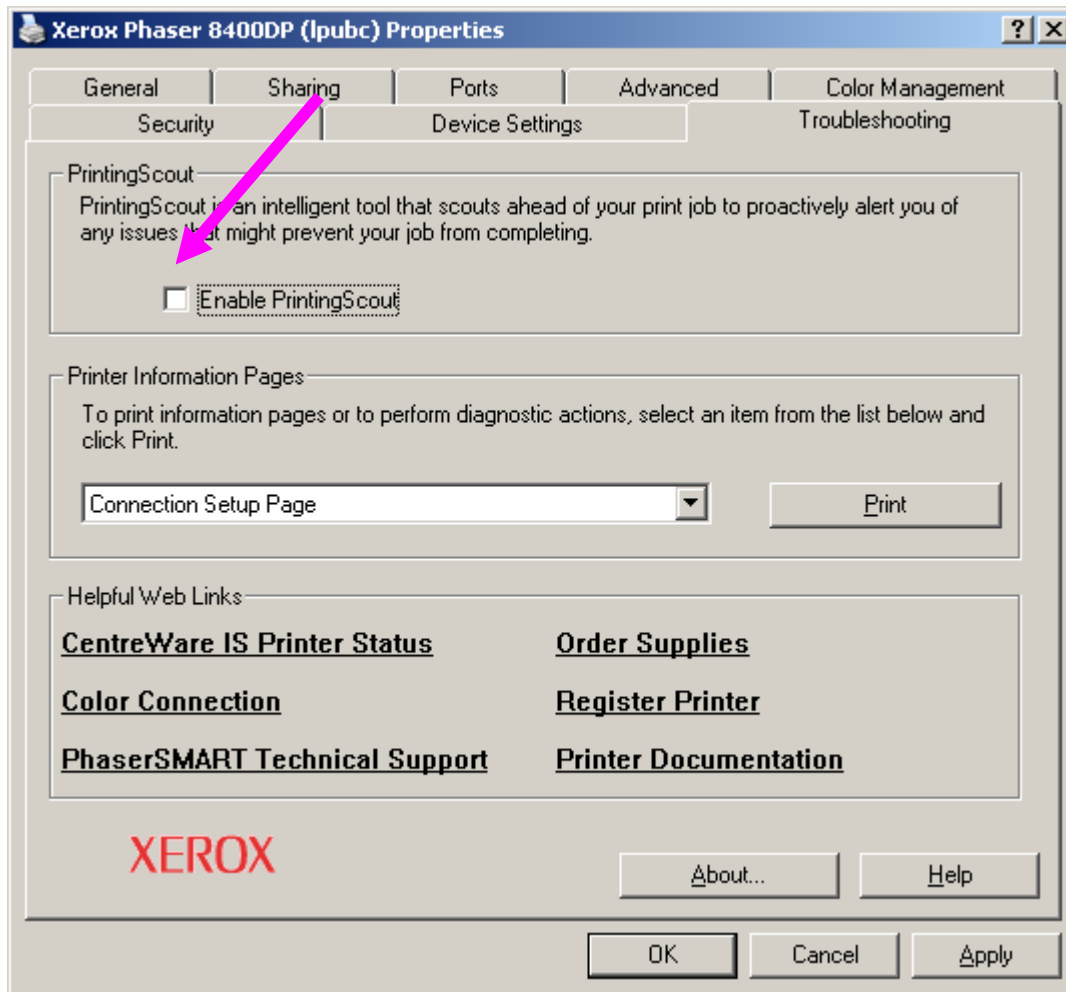


Click the “Troubleshooting” tab at the top of the properties window.

Uncheck the box next to “Enable PrintingScout”.

Click “Apply” then click “OK”.

The printer should be setup.



Email systems@math.purdue.edu if you need assistance.