

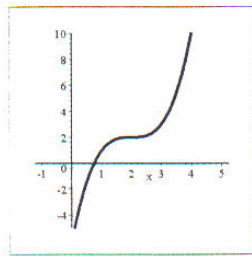
MA 223 Even Answers

Section 4.1

- 22) decreasing: $(-\infty, -1) \cup (0, 1)$
 increasing $(-1, 0) \cup (1, \infty)$
- 24) decreasing: $(-\infty, -\frac{3}{2}) \cup (-\frac{3}{2}, \infty)$
- 26) decreasing: $(-\infty, -1) \cup (1, \infty)$
 increasing: $(-1, 1)$
- 30) decreasing on $(-\infty, 5)$
 increasing on $(5, \infty)$
- 34) decreasing: $(0, 1) \cup (1, 2)$
 increasing: $(-\infty, 0) \cup (2, \infty)$
- 60) relative maximum: $F(-2) = 84$
 relative minimum: $F(2) = -44$
- 64) no relative extrema
- 66) relative minimum: $g(10) = 610$
- 74) increasing: $(0, 4000)$
 decreasing: $(4000, \infty)$

Section 4.2

- 10) b
- 12) c
- 22) concave downward: $(-\infty, \infty)$
- 26) concave upward: $(-\infty, 0) \cup (1, \infty)$
 concave downward: $(0, 1)$
- 40) concave downward: $(-\infty, 2) \cup (2, \infty)$
- 44) $(\frac{1}{2}, \frac{1}{2})$
- 54) relative minimum: $(-\frac{3}{4}, \frac{47}{8})$
- 56) relative maximum: $(-\sqrt{2}, 4\sqrt{2})$,
 relative minimum: $(\sqrt{2}, -4\sqrt{2})$
- 68) relative minimum: $f(0) = 0$
- 70)

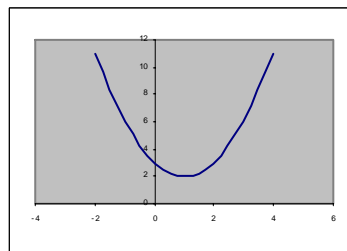


(or similar)

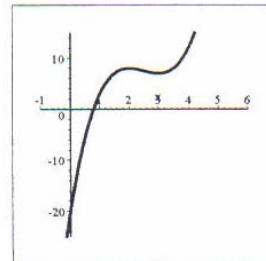
Section 4.3

- 12) horizontal: $y = 0$,
 vertical: $x = -2$
- 16) horizontal: $y = \frac{1}{2}$
 vertical: $t = \frac{1}{2}$
- 18) horizontal: none
 vertical: none
- 20) horizontal: none
 vertical: $x = -2, x = 2$

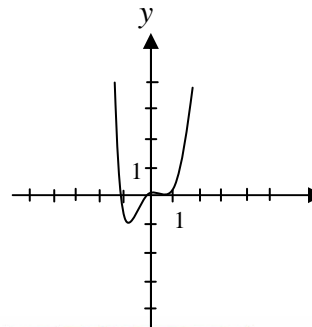
38)



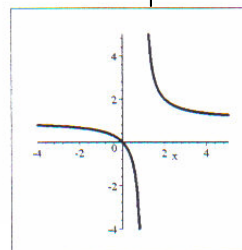
42)



44)



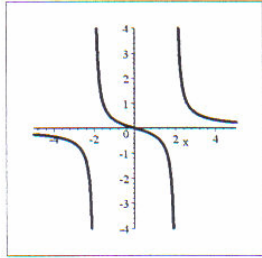
52)



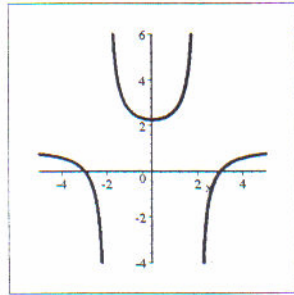
MA 223 Even Answers

Section 4.3 (con't)

54)



56)



Section 4.4

- 16) absolute minimum: $g(1) = -4$
absolute maximum: $g(4) = 5$
- 18) absolute maximum: $f(3) = 9$
absolute minimum: $f(6) = -6$
- 20) absolute maximum: $g(1) = 3, g(-2) = 3$
absolute minimum: $g(-3) = -1, g(0) = -1$
- 56) 11:30 AM

Section 4.5

- 2) 500 yd. x 1500 yd.
 $A = 750,000$ sq. yd.
- 4) $\frac{14}{3}$ in. by $\frac{35}{3}$ in. by $\frac{5}{3}$ in.
- 6) 6 in. by 6 in. by 3 in.
- 8) 2 ft. by 2 ft. by 5 ft.
- 10) 5 in. by 10 in.
- 16) 20 trees/acre
- 28) $r = \frac{440}{\pi} \approx 140.06$ ft.
 $l = 440$ ft. ,
 $A = 184,874$ sq ft

MA 223 Even Answers