

These slides are to help those students who have previously used **MyMathLab (previously called CourseCompass)** in MA 15200, MA 22000 or MA 15910, MA 11100, or another math course here at Purdue. (If you used MathXL; it is different than **MyMathLab**.) You would need to view the presentation to register for the first time in MyMathLab.

Follow the steps  
explained in the  
following slides.

If you used MyMathLab ( or coursecompass) previously in any math course at Purdue and you remember your login name and password, you can login as usual. The site is [www.pearsonmylabandmastering.com](http://www.pearsonmylabandmastering.com).

The screenshot shows the homepage of the MyLab / Mastering website. At the top is a purple header with the text "MyLab / Mastering". Below this is a navigation bar with links: Home, Learn About, Students, Educators, and Contact Us. The main content area features a large banner on the left with the text "The moment you know" and a subtext "That inspired moment when something that was difficult to understand makes perfect sense." Below this is a button that says "Learn more about MyXLab". To the right of the banner is a "Sign in" section with the text "Already registered? Sign in with your Pearson account." and a "Sign in" button. Below the "Sign in" button is a "Register" section with the text "Need access? Start here." and two buttons: "Student" and "Educator". At the bottom of the page, there are three columns of content. The first column is titled "For Students" and lists links: Get Started, Tours, What's New, System Requirements, and Support. The second column is titled "For Educators" and lists links: Get Started, Tours, What's New, System Requirements, and Support. The third column features a photo of a smiling woman and a quote: "MyXLab helped me get really high grades in class." Below the quote is the text "Jackie likes that MyXLab allows her to learn at her own pace." and a link "Read more student feedback" with a right arrow icon. The footer of the page is purple and contains the Pearson logo on the left and the text "ALWAYS LEARNING" on the right. Below the footer is a copyright notice: "Copyright © 2011 Pearson Education Inc. All Rights Reserved Pearson Higher Education | Legal Notice | Privacy Policy | Contact Us".

MyLab / Mastering

Home Learn About Students Educators Contact Us

The moment you know

That inspired moment when something that was difficult to understand makes perfect sense.

Learn more about MyXLab

Sign in

Already registered? Sign in with your Pearson account.

Sign in

Register

Need access? Start here.

Student

Educator

For Students

- Get Started
- Tours
- What's New
- System Requirements
- Support

For Educators

- Get Started
- Tours
- What's New
- System Requirements
- Support

"MyXLab helped me get really high grades in class."

Jackie likes that MyXLab allows her to learn at her own pace.

Read more student feedback

PEARSON

ALWAYS LEARNING

Copyright © 2011 Pearson Education Inc. All Rights Reserved Pearson Higher Education | Legal Notice | Privacy Policy | Contact Us

**CLICK  
Sign in.  
Enter your  
username  
and  
password.**

myPEARSON Hello, Charlotte Bailey ( [not you?](#) )

[Edit Profile](#) [Help & Support](#) [Log Out](#)

#### MyCourseCompass Courses

[Enroll in Another Course](#)

**MA 11100, intermediate algebra, sp09, 003**

Course ID: bailey18402

**MyMathLab**

[Details](#)

Instructor: Charlotte Bailey

#### Announcements

##### General Announcements

CourseCompass Service Update Postponed Nov 20, 2009

CourseCompass & myPearson Summer '09 Upgrades Now Available Jul 25, 2009

CourseCompass and Microsoft Internet Explorer 8 Apr 29, 2009

View: Last 7 Days

##### ▼ MA 11100, intermediate alge...

There are no announcements available for the last 7 days. Try changing the view option above.

#### MyPlaces

[CourseCompass Student Access](#)

##### Additional Services

[MyPearsonStore](#)

#### Need Help?

- [Getting Started with CourseCompass](#)
- [Support Center](#)
- [Where is Research Navigator?](#)
- [Where is the TestGen Application?](#)

You will see whatever class or classes you had been enrolled in previously. Above that class, click on

**‘Enroll in Another Course’.**

Product Selection - Mozilla Firefox

File Edit View History Bookmarks Tools Help

pearsoncmg.com https://register.pearsoncmg.com/reg/newcourseenroll/CourseIDInput.jsp?smsuserid=22032018

Most Visited Customize Links Free Hotmail Windows Marketplace Windows Media Windows Mozilla Firefox Start P...

Product Selection

**PEARSON CourseCompass™**  
Powered by Blackboard™

**Product Selection** ★ Fields are required [Video Tutorial](#) [Help](#) ?

**Course ID** ?

Your instructor will give you a Course ID. Enter it in the box.

★ **Course ID**

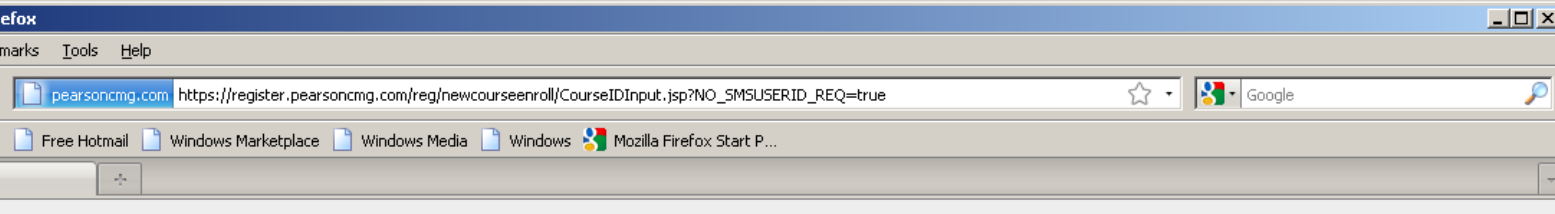
**Find Course**

Sample Course ID: Lastname63298

**Cancel**

Copyright Pearson Education, 1997-2009  
[Customer Technical Support](#) | [Privacy Policy](#) | [License Agreement](#)

Simply enter your new Course ID that is given to you by your instructor for your new class. Note: If you do not receive the course ID via paper from your instructor, he/she might have those ID's on the course web page ([www.math.purdue.edu/MA15910](http://www.math.purdue.edu/MA15910)).



**PEARSON CourseCompass™**  
Powered by Blackboard™

### Product Selection

\* Fields are required [Video Tutorial](#) [Help](#) ?

**Course ID** ?

Your instructor will give you a Course ID. Enter it in the box.

\* **Course ID**  
 [Find Course](#)  
Sample Course ID: Lastname63298

The Course ID you entered matched the following course.

**Course:** bailey18402 - MA 11100, intermediate algebra, sp09, 003  
**End Date:** Dec 31, 2009  
**Instructor:** Charlotte Bailey  
**Instructor's Email:** baileycm@purdue.edu

**Enrollment Options** ?

You can access your course using an access code, or you can buy online.

☒ **Access Code**

\* **Enter Your Access Code**  
 -  -  -  -  -

**Example**  
SIMPLE-FRILL-TONLE-WEIRS-CHOIR-FLEES

☐ **Buy Now**

[Cancel](#) [Next](#) ▶

If you were **previously using a different textbook or were in a different course**, you will have to enter your new access code.

If you were **in the same course**, you do not need to purchase a new textbook and access code. You will not be asked for an access code here, but will simply be enrolled in the new class.

Simply follow whatever directions may remain until you receive confirmation that you are in the new class. If you need help, see your instructor or the course coordinator.