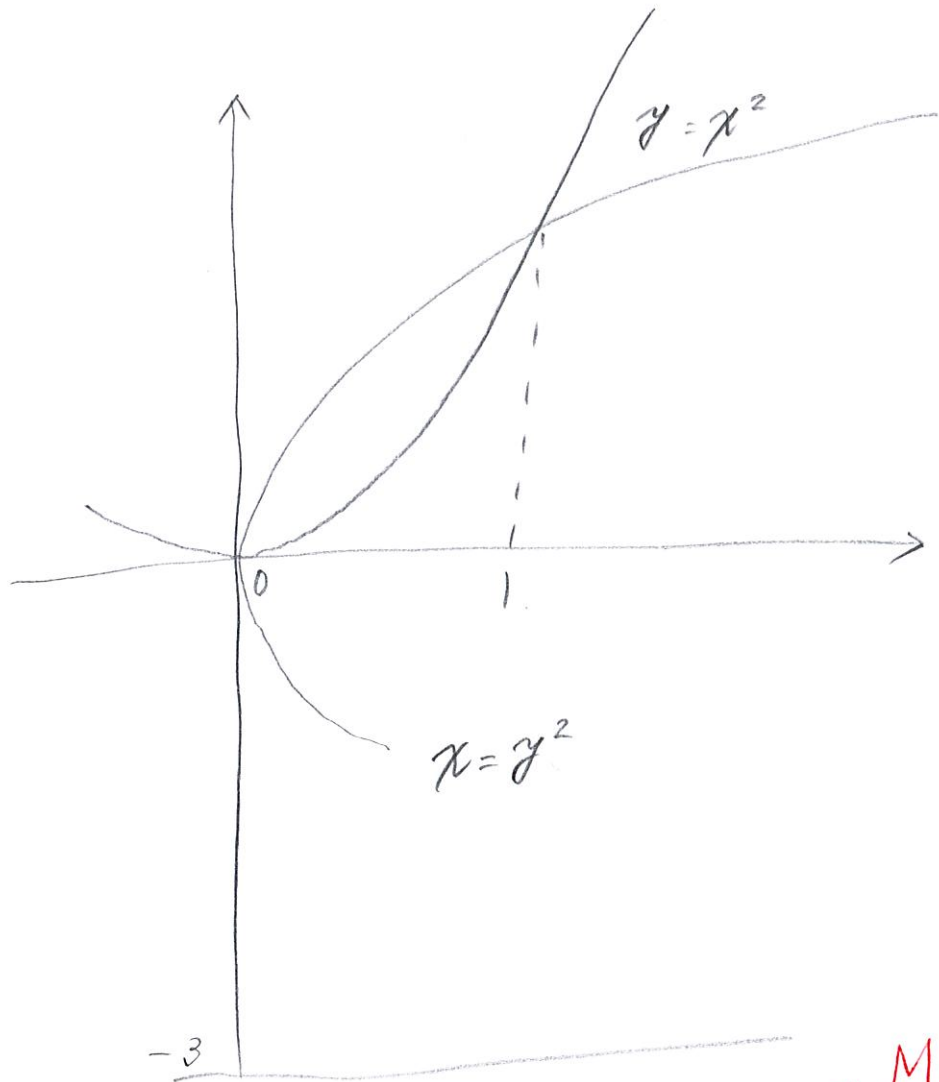


8.1.



(i) $\int_0^1 \{ \pi (\sqrt{x} + 3)^2 - \pi (\cancel{x})^2 \} dx$

\uparrow
 $x^2 + 3$ Correction

Mistake

(ii) $\int_0^1 2\pi (y + 3) \{ \sqrt{y} - y^2 \} dy$