

MA 111 Fall 1999

Exam 1 Answers

1. B

2. E

3. D

4. a) 3.5

b) 6

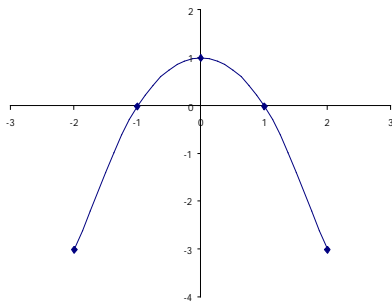
5. 2 hours, 40 minutes

6. 12, 21

7. a) $-\frac{2x^3z^{10}}{9y^2}$

b) $\frac{27y^3z^{21}}{x^6}$

8.



9. slope: $-\frac{7}{4}$; y- intercept: 2 or (0,2)

10. a) $C(p) = 30 + .07p$

b) \$170