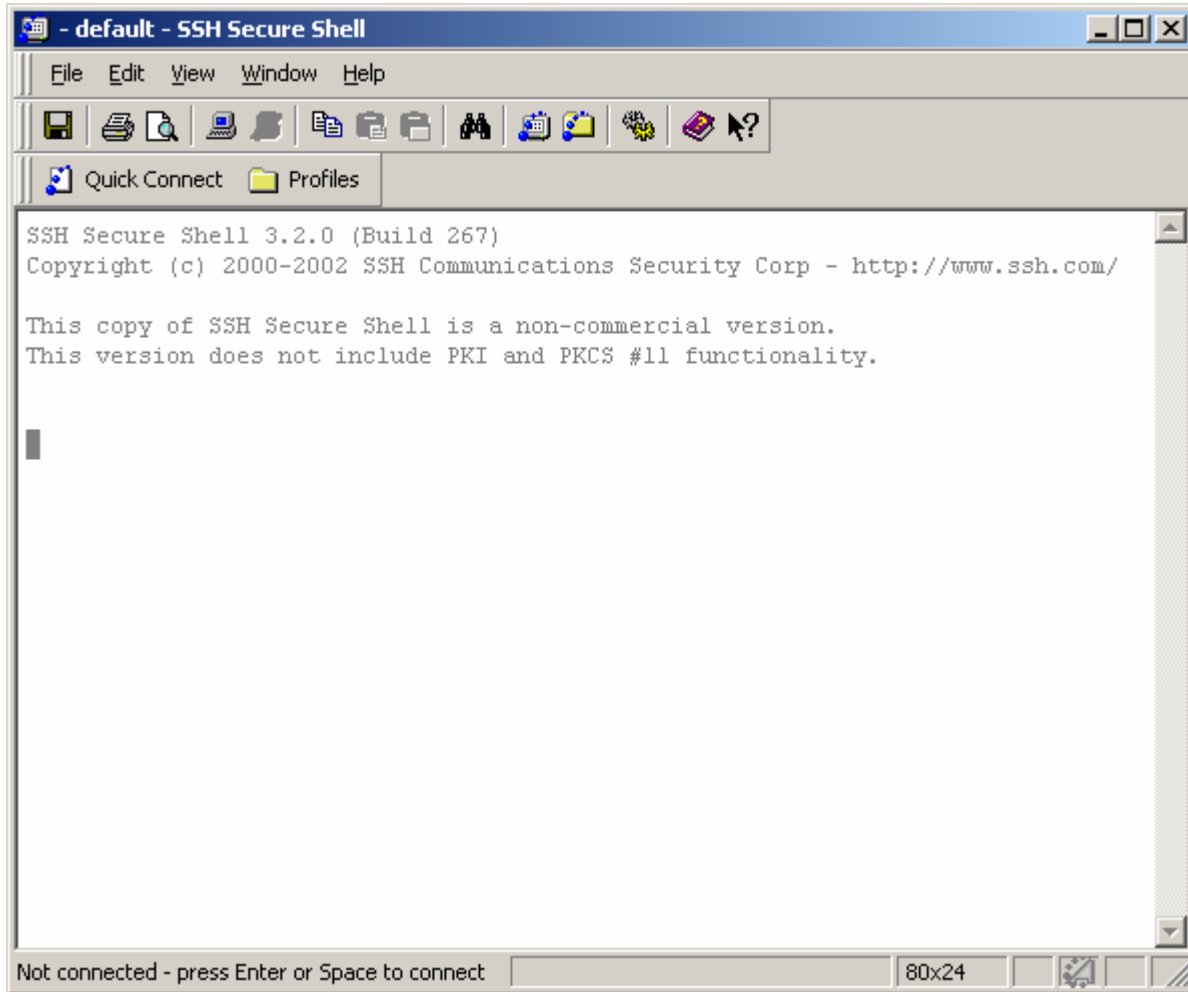
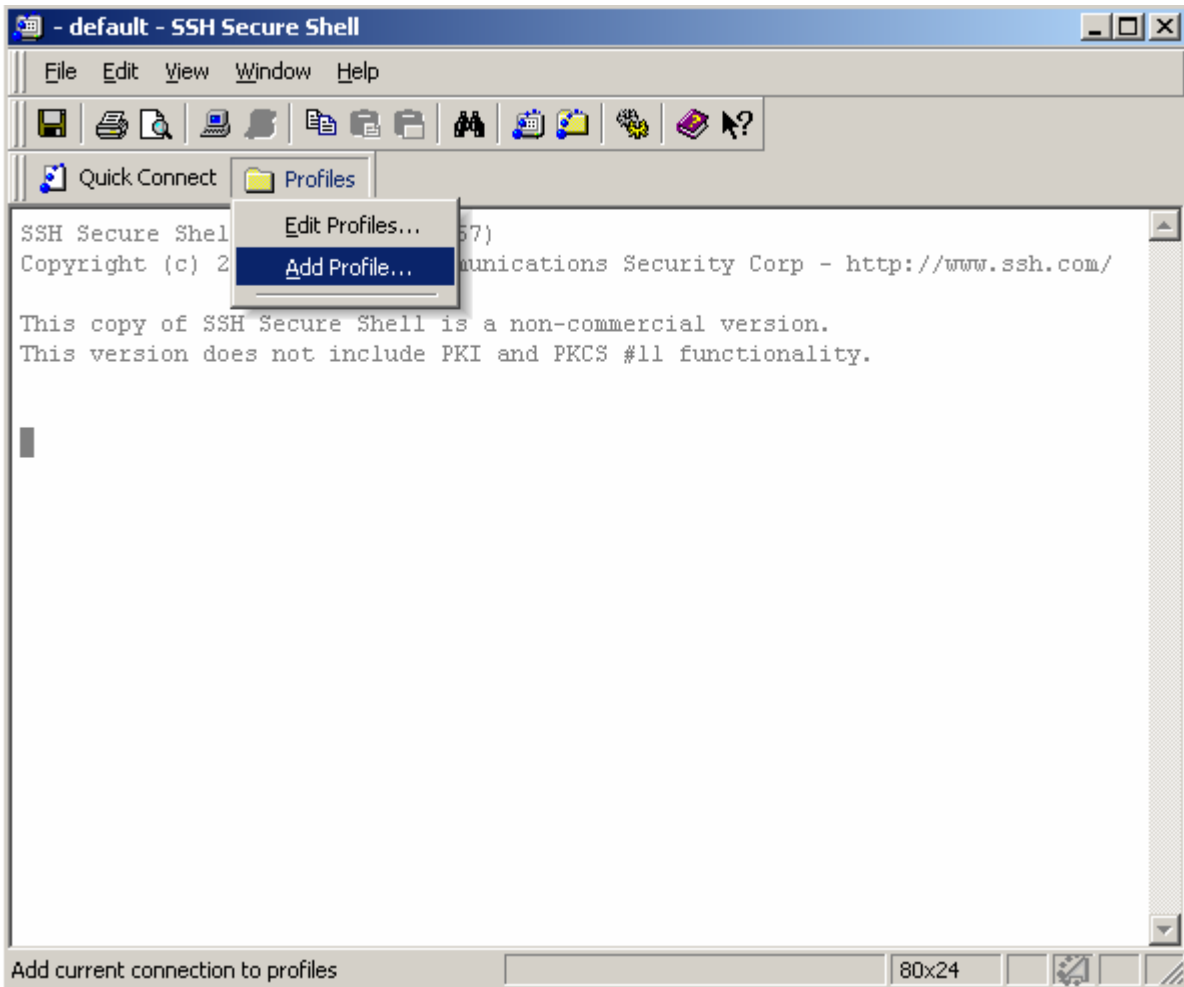


SSH Secure Shell Client Connection Setup for Windows XP

Once the SSH Client has been installed, launch the application.



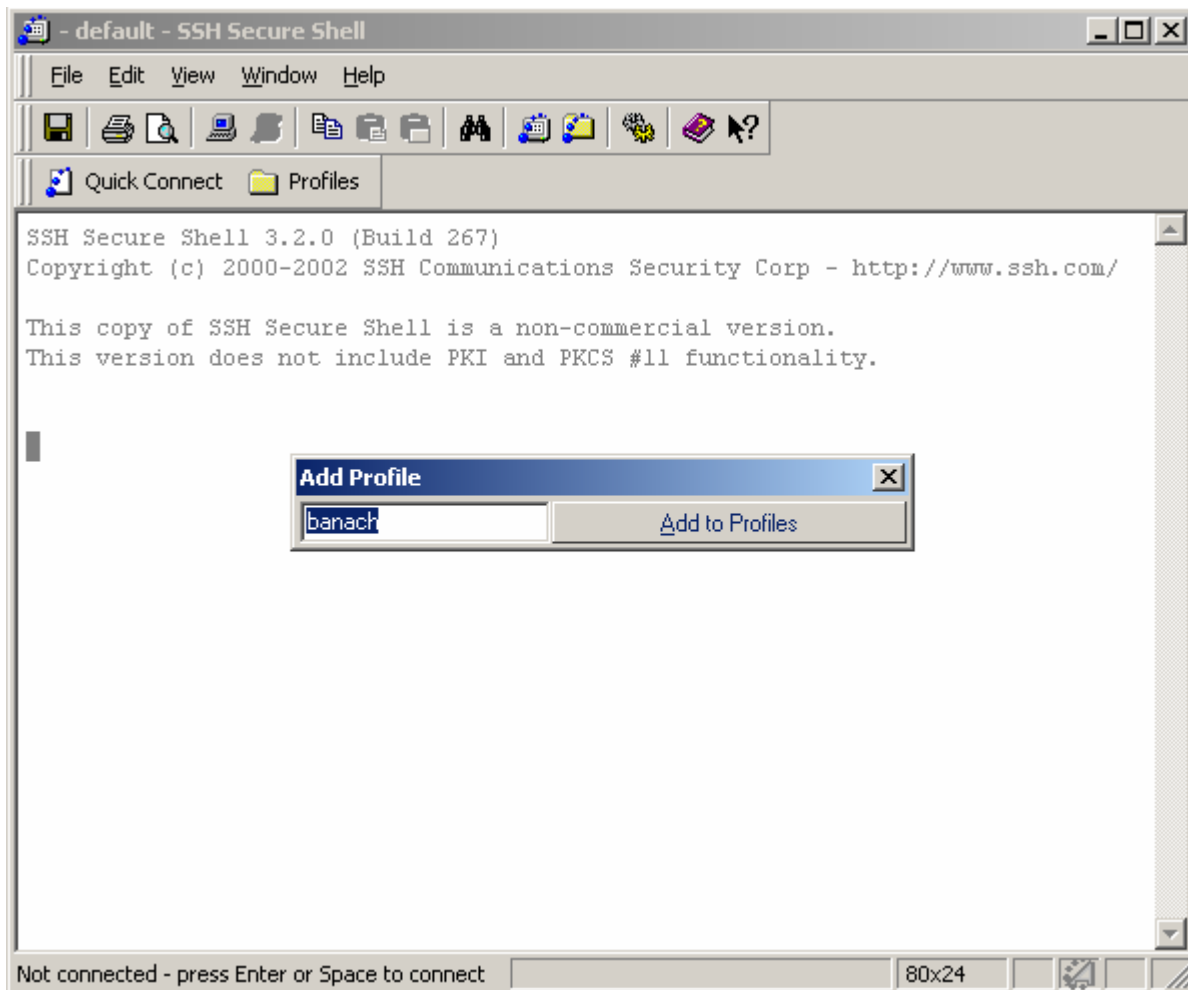
Click the PROFILES button, and then click ADD PROFILE.



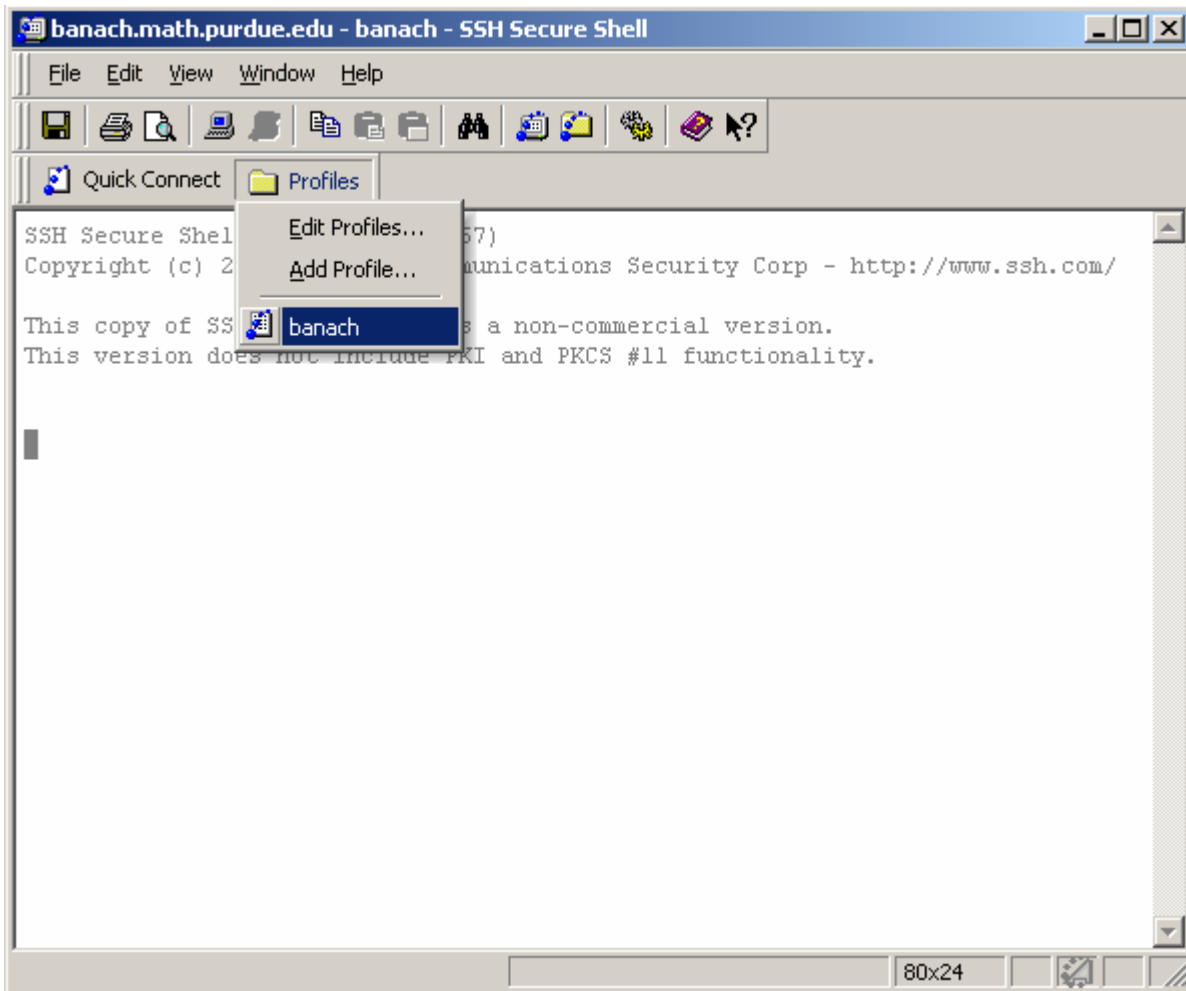
Enter a name for the profile. Usually the name of the server you're creating a connection to.

Refer to the "Systems List" page on the Computing Resources website for a list of math servers.

Click ADD TO PROFILES.

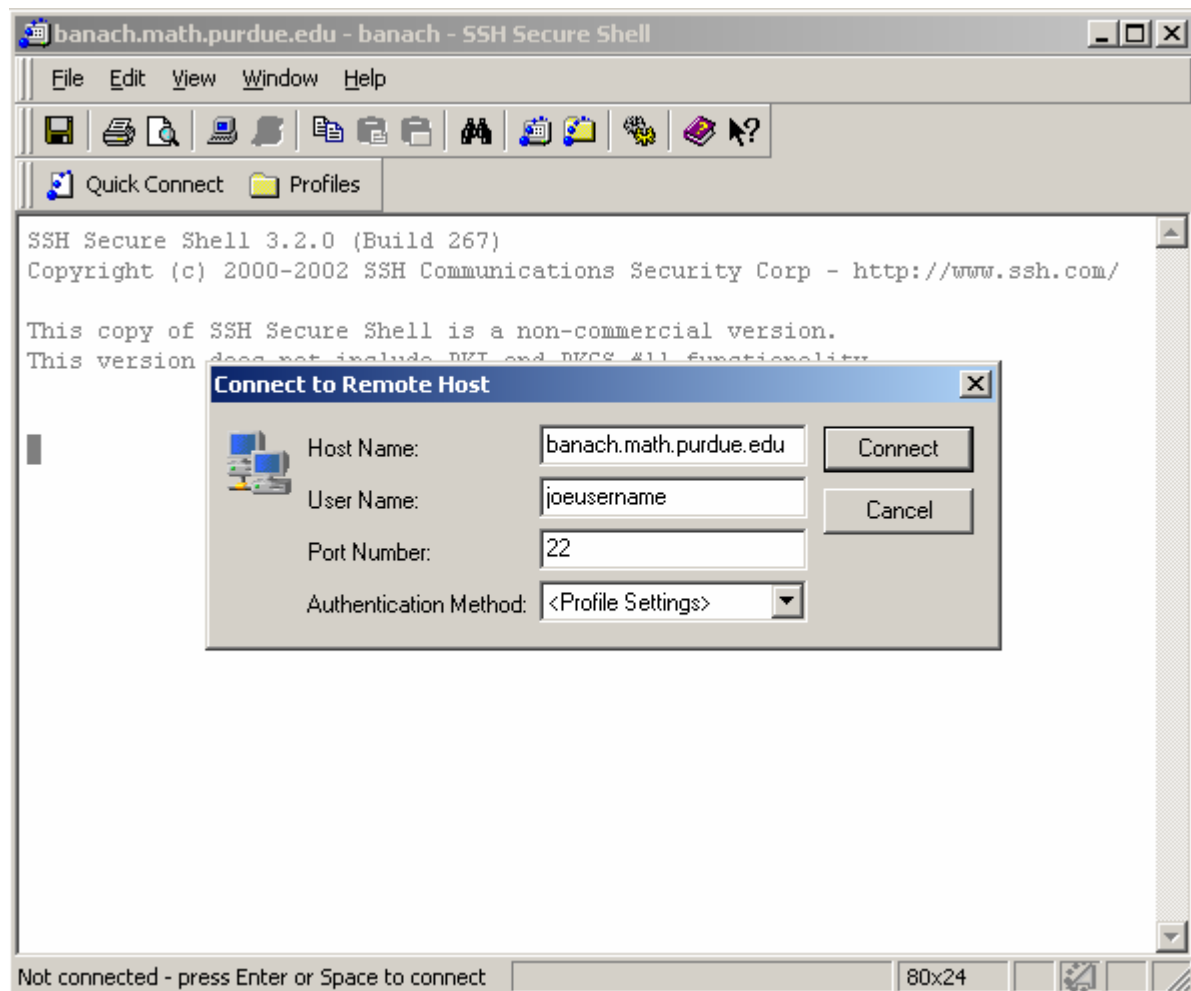


Click the PROFILES button. Then click the profile name you just created.

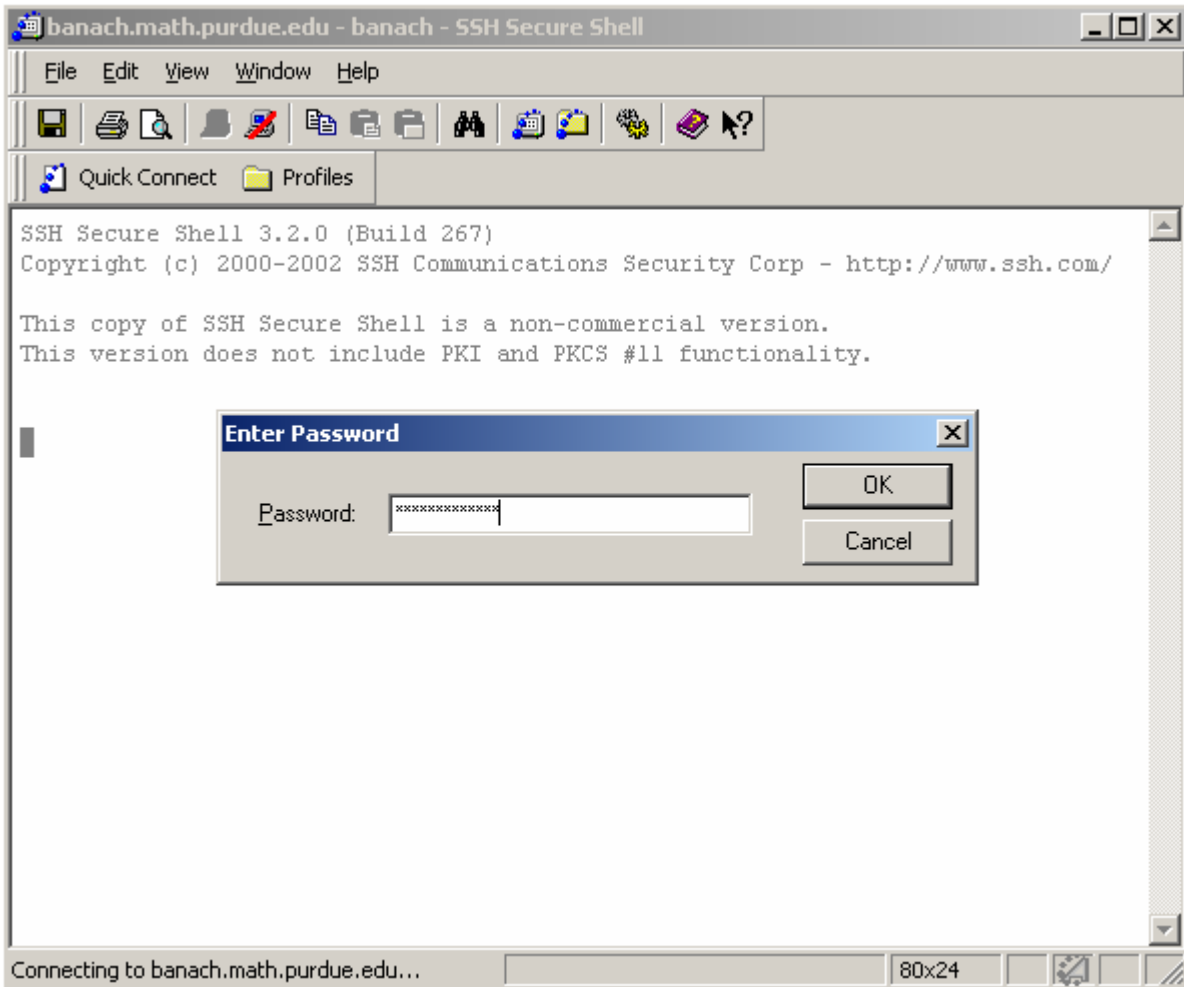


Enter a HOST NAME and your USER NAME. Click CONNECT.

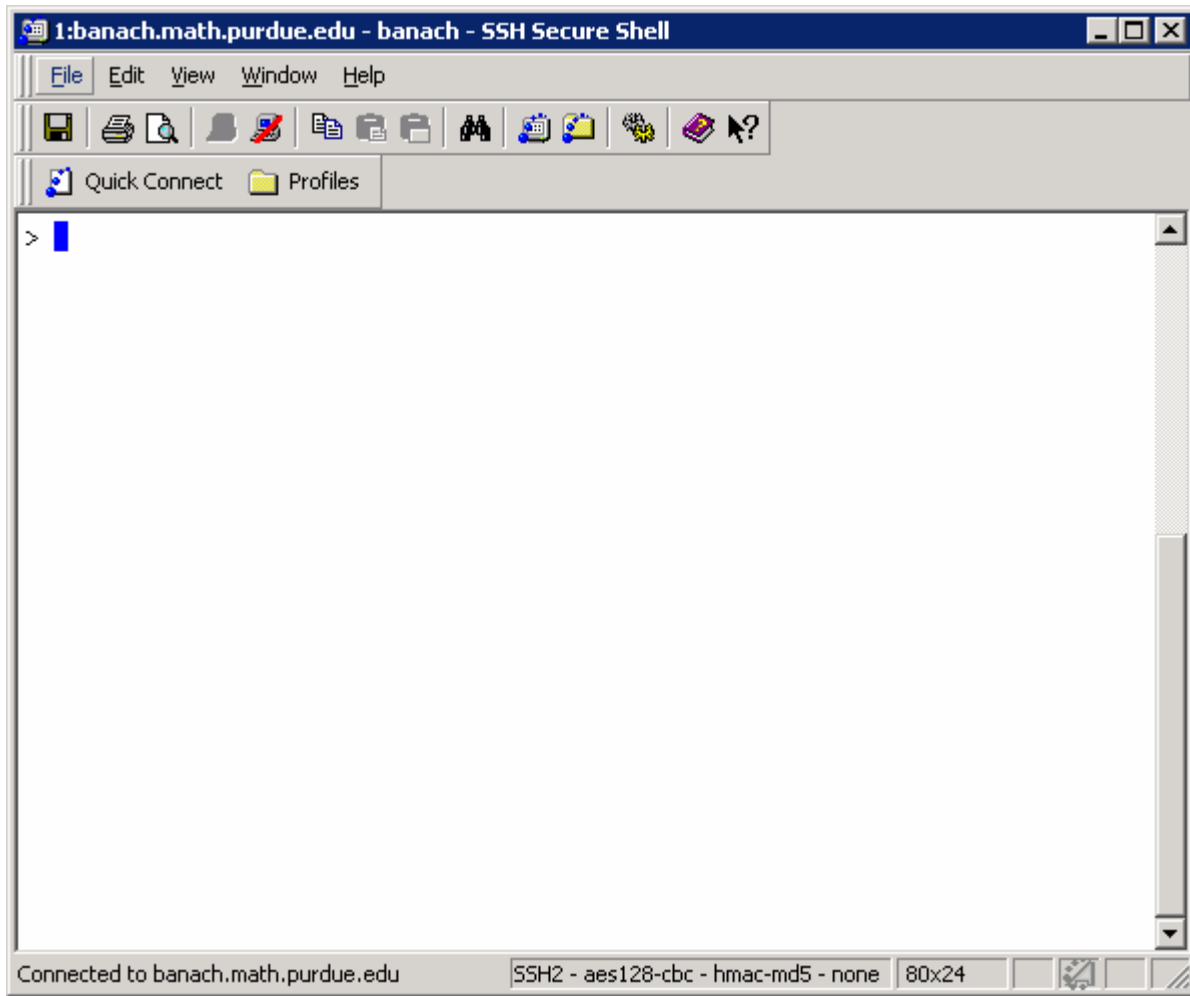
Refer to the "Systems List" page on the Computing Resources website for a list of math servers.



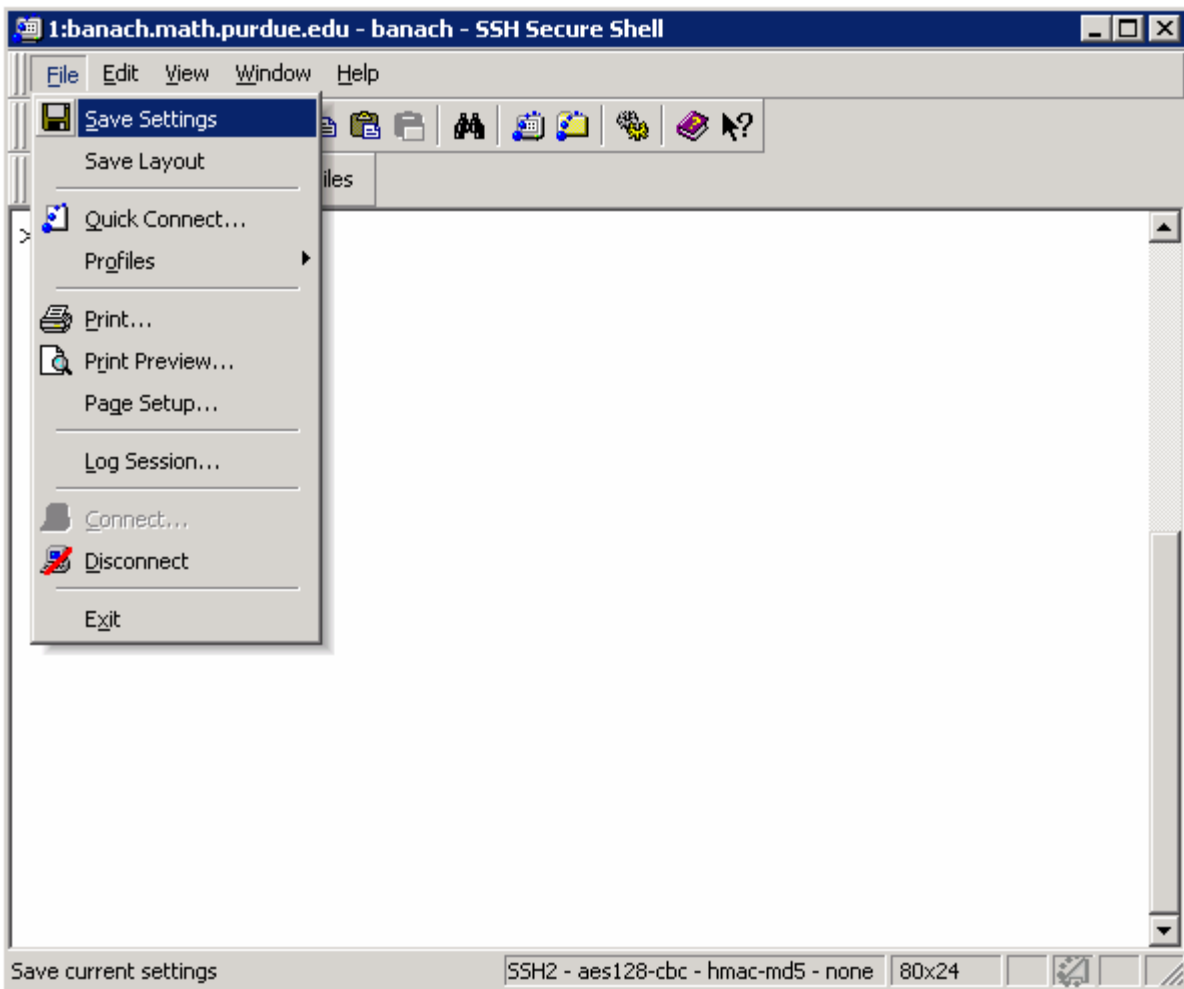
Enter your PASSWORD. Click OK.



You should be connected.



Click FILE then SAVE SETTINGS.



Email systems@math.purdue.edu if you need assistance.