

Quiz 6 Key — MA161 — September 14, 2018

Alden Bradford

Min	Mean	Max
6	14	20

1. (12 points) The limit

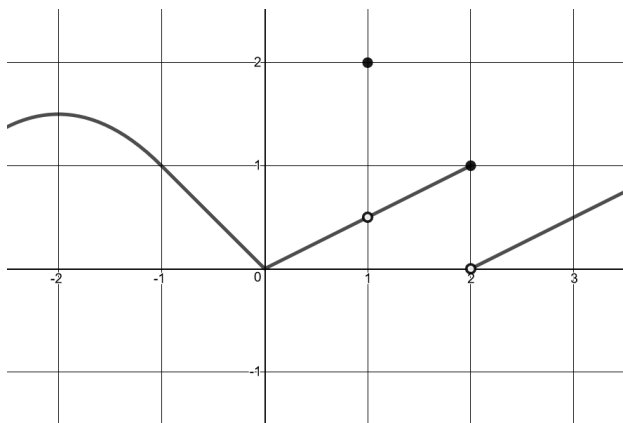
$$\lim_{h \rightarrow 0} \frac{\cos(h^2) - 1}{h}$$

represents $f'(a)$, the derivative of some function f at some number a . Find such an f and a .

$$f(x) = \cos(x^2), a = 0$$

NOTE: this problem appeared on the first midterm exam in the fall of 2016.

2. (8 points) The graph of f is given. State the numbers at which f is NOT differentiable.



0, 1, and 2.

NOTE: this problem appeared on the first midterm exam in the summer of 2018.