

**FIGURES FOR INVERSE PROBLEM PAPER IN 3D**

JUAN E. SANTOS

*Departamento de Geofísica Aplicada, Facultad de Ciencias Astronómicas y Geofísicas,  
Universidad Nacional de La Plata,  
Paseo del Bosque s/n, La Plata (1900), Argentina*

*and Department of Mathematics, Purdue University, West Lafayette, Indiana 47907, USA*

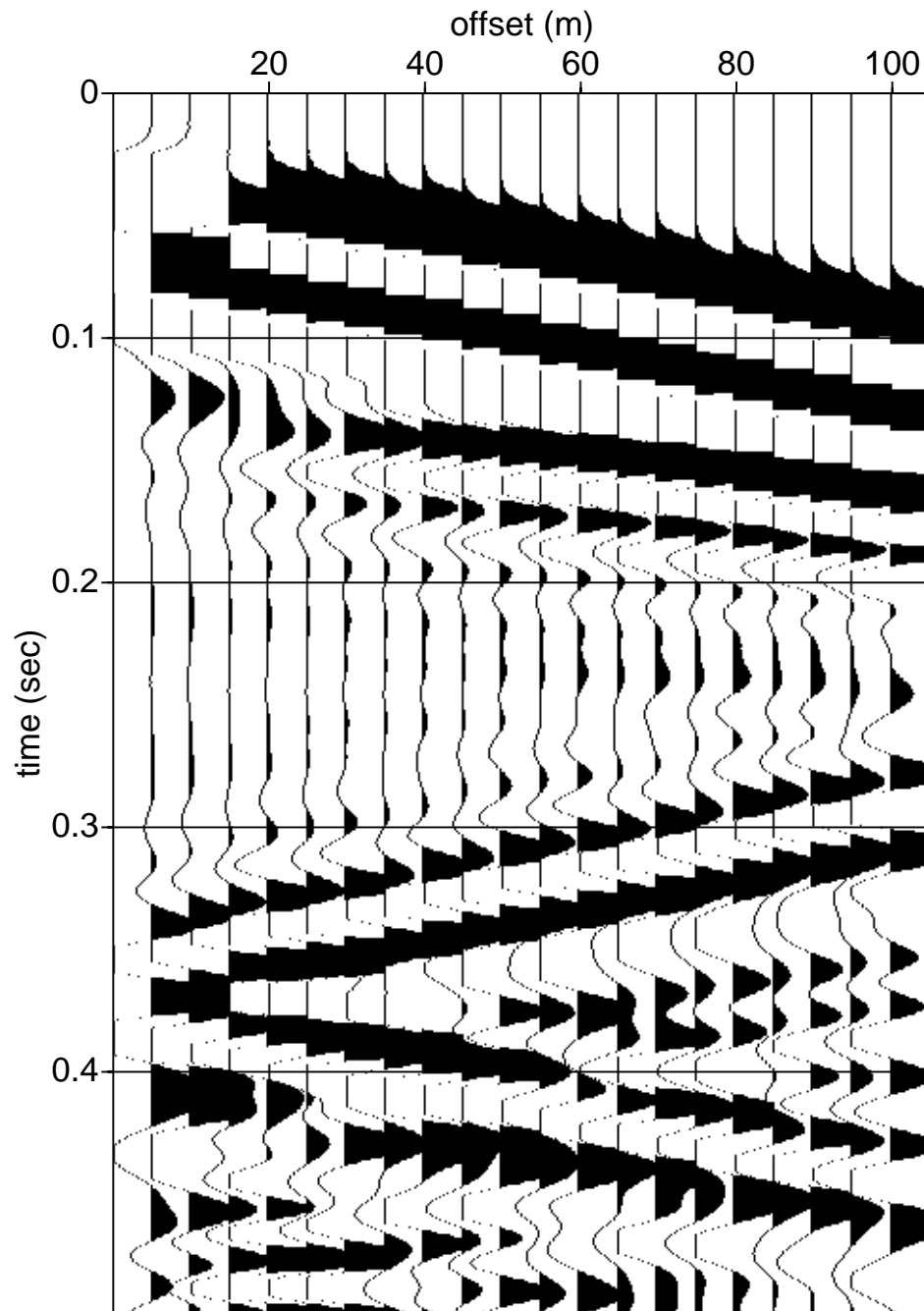


Figure 1:

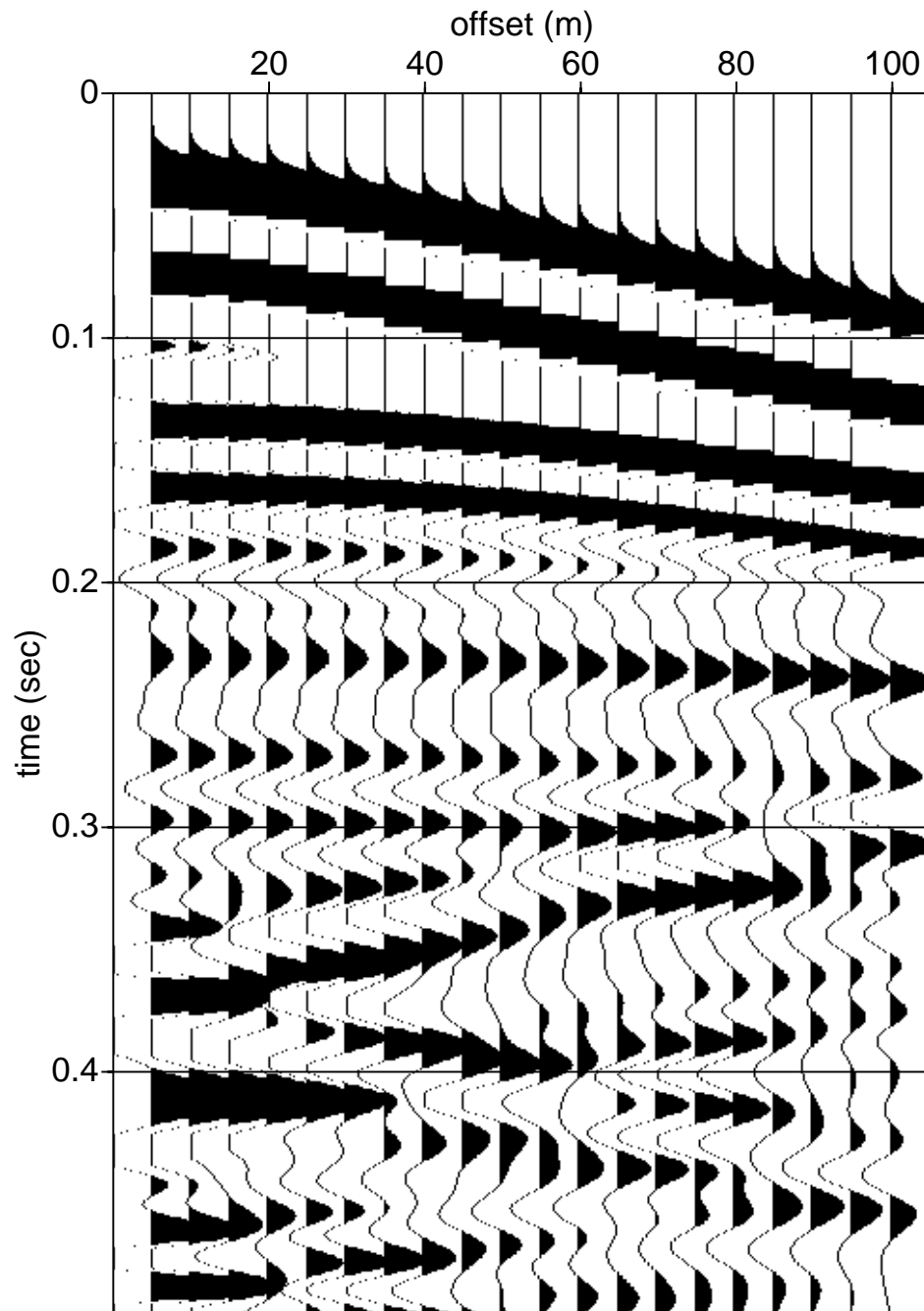


Figure 2:

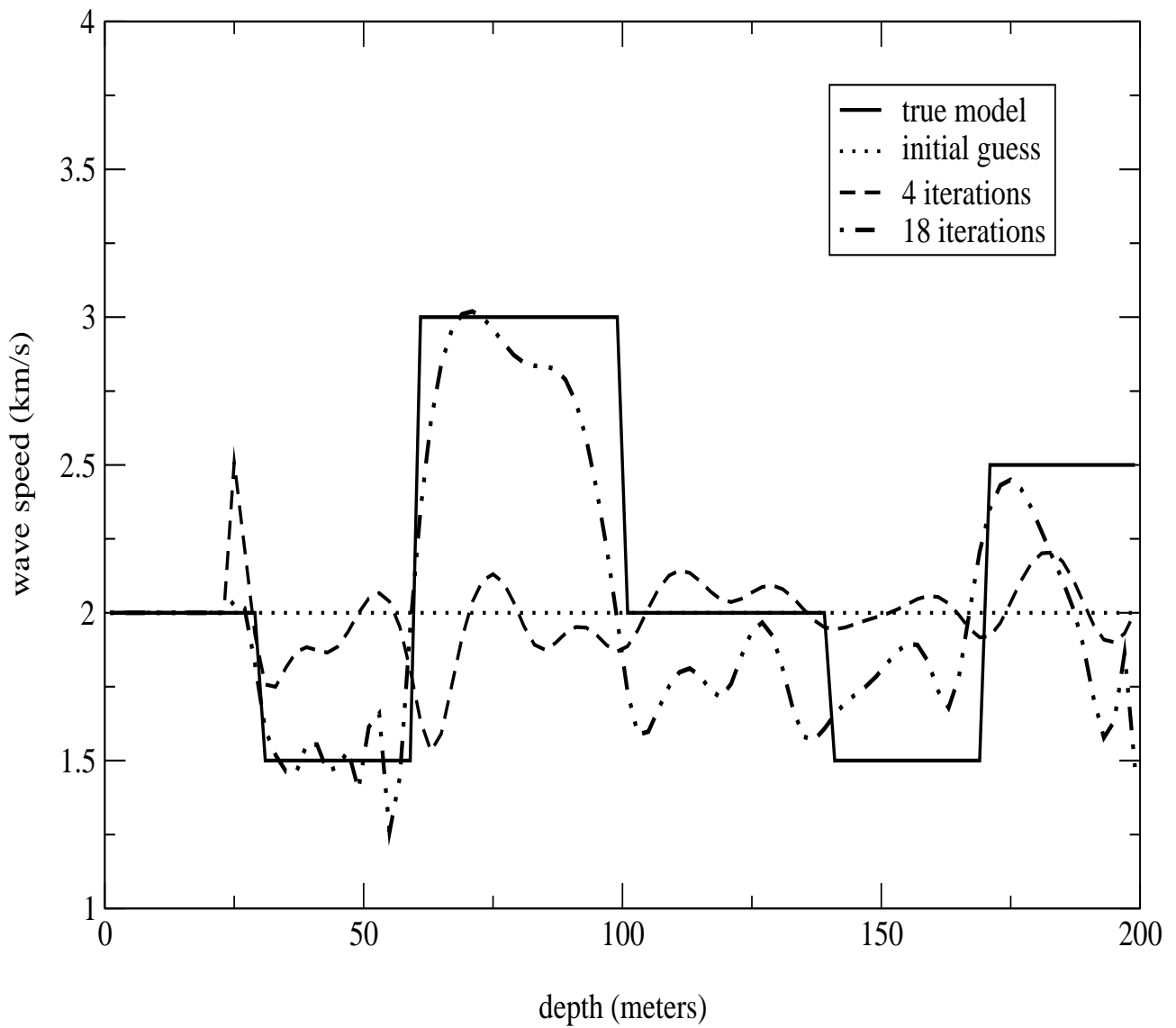


Figure 3:

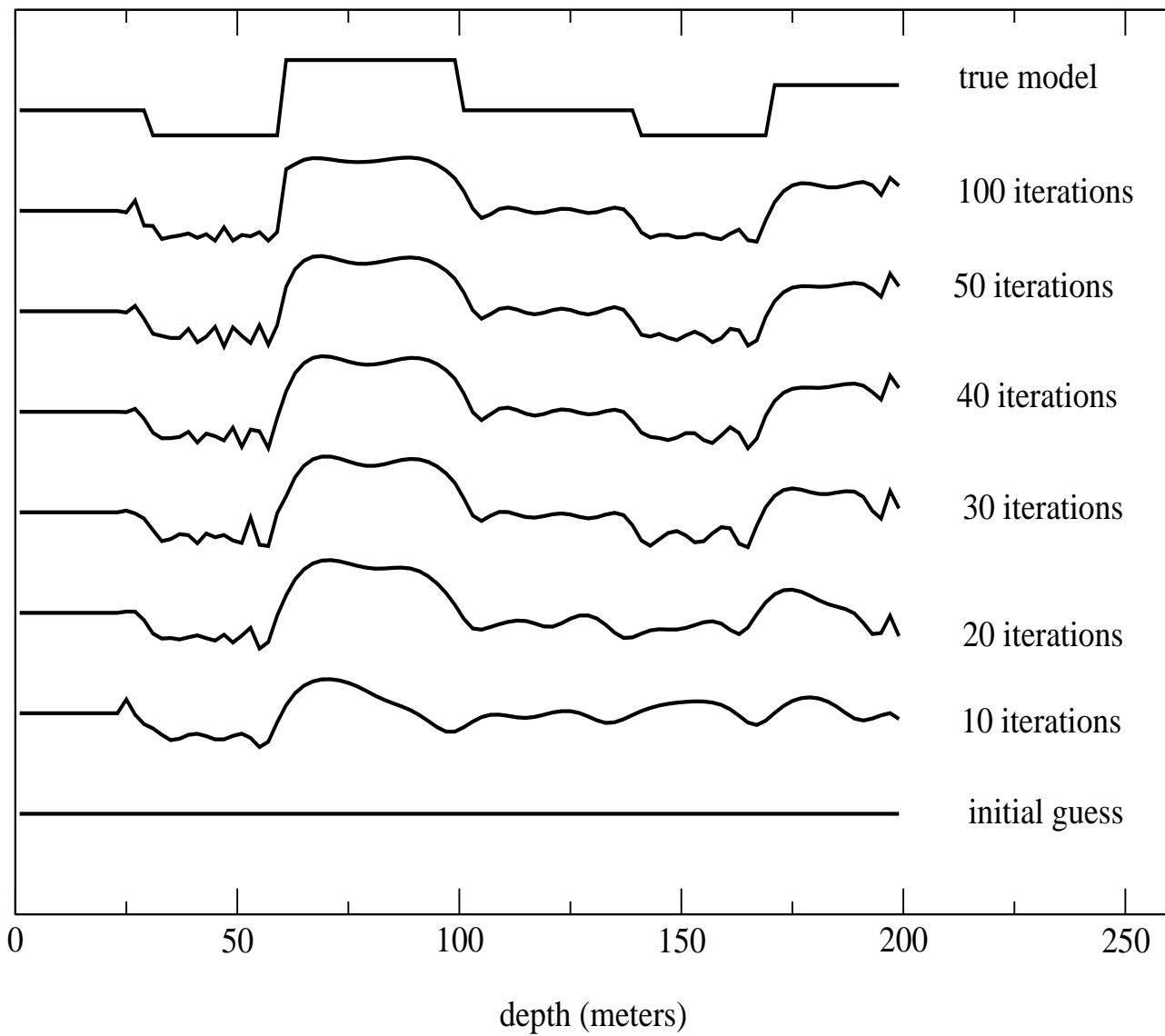


Figure 4:

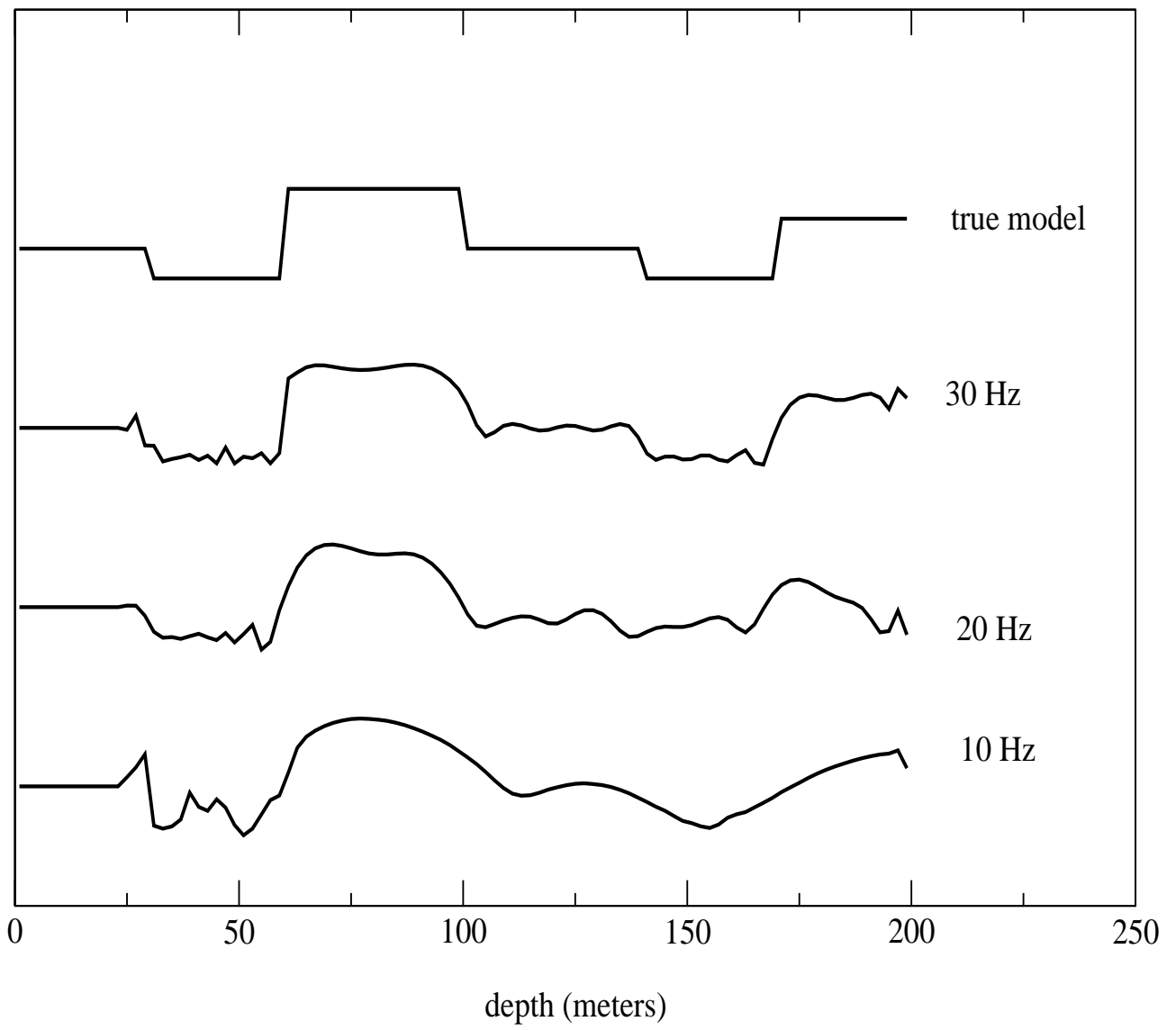


Figure 5:

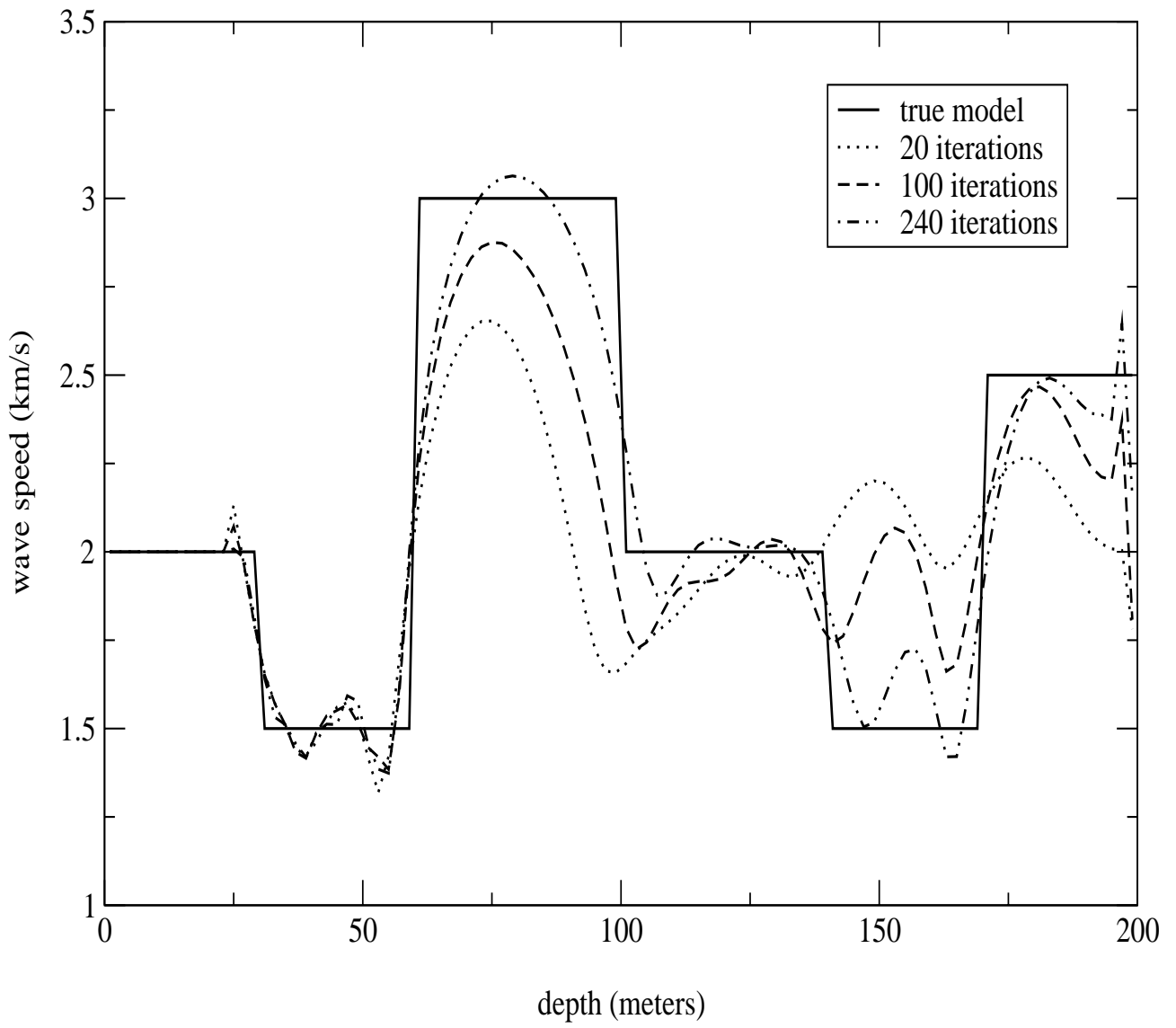


Figure 6:

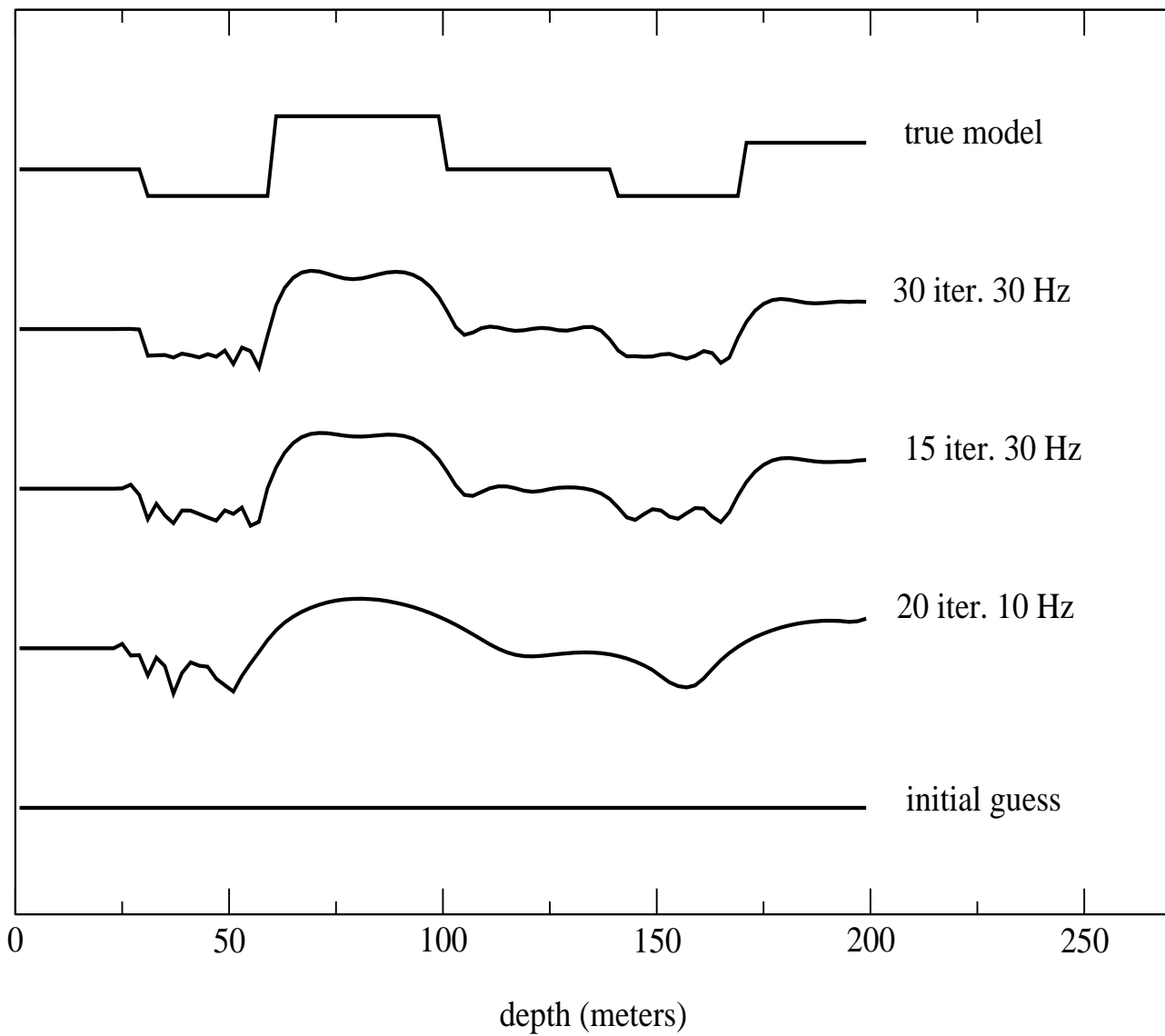


Figure 7:

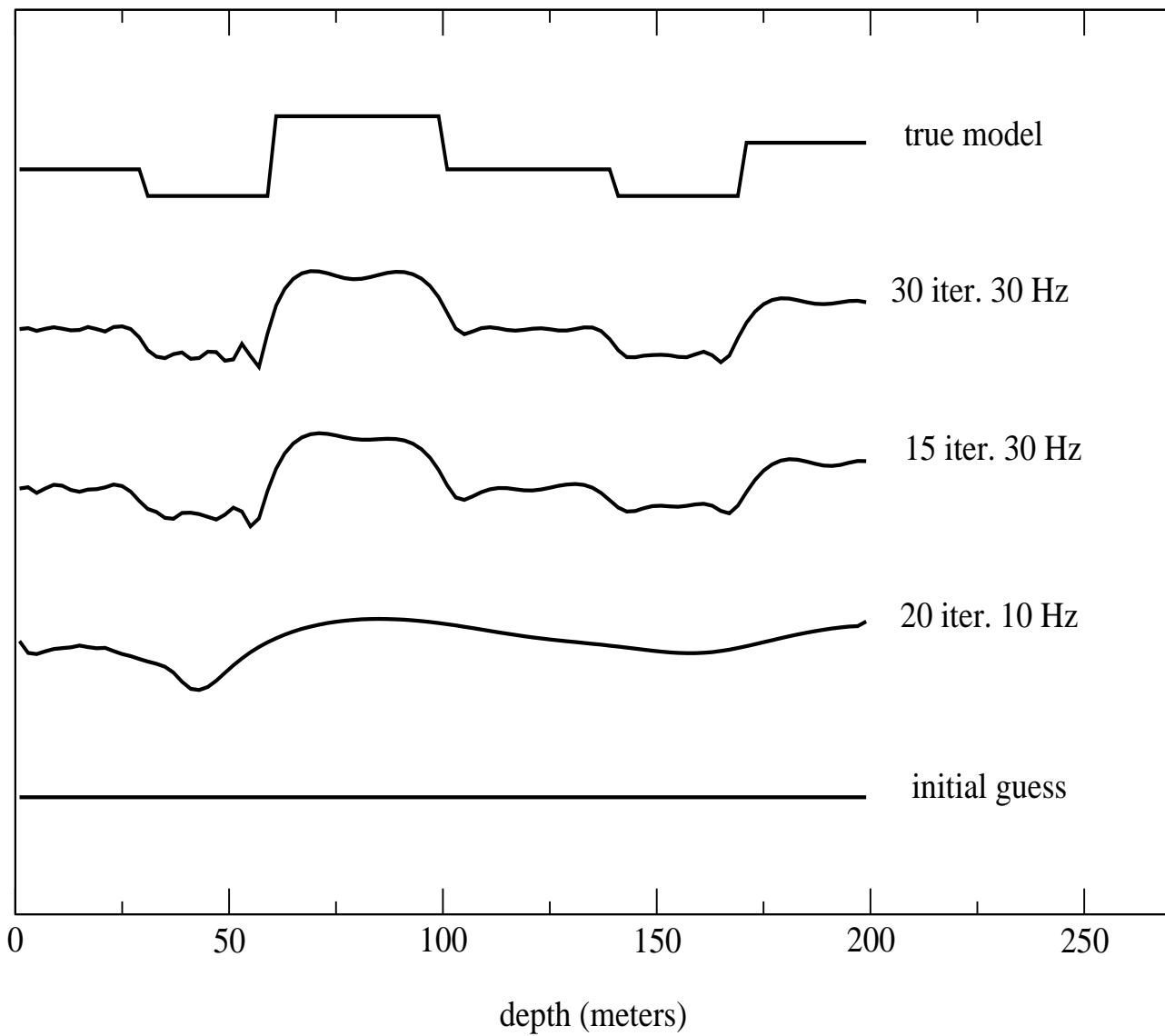


Figure 8:

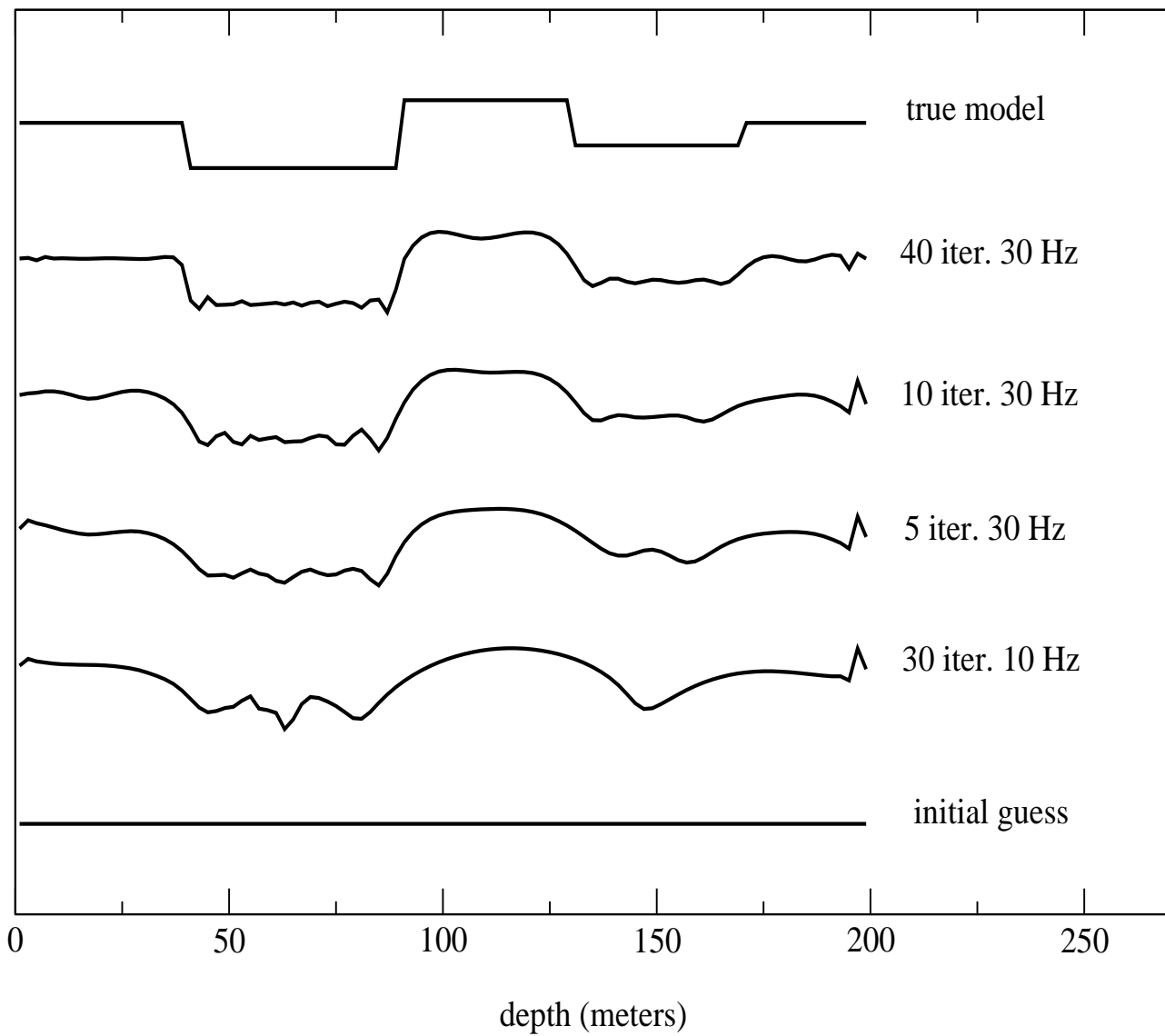


Figure 9: